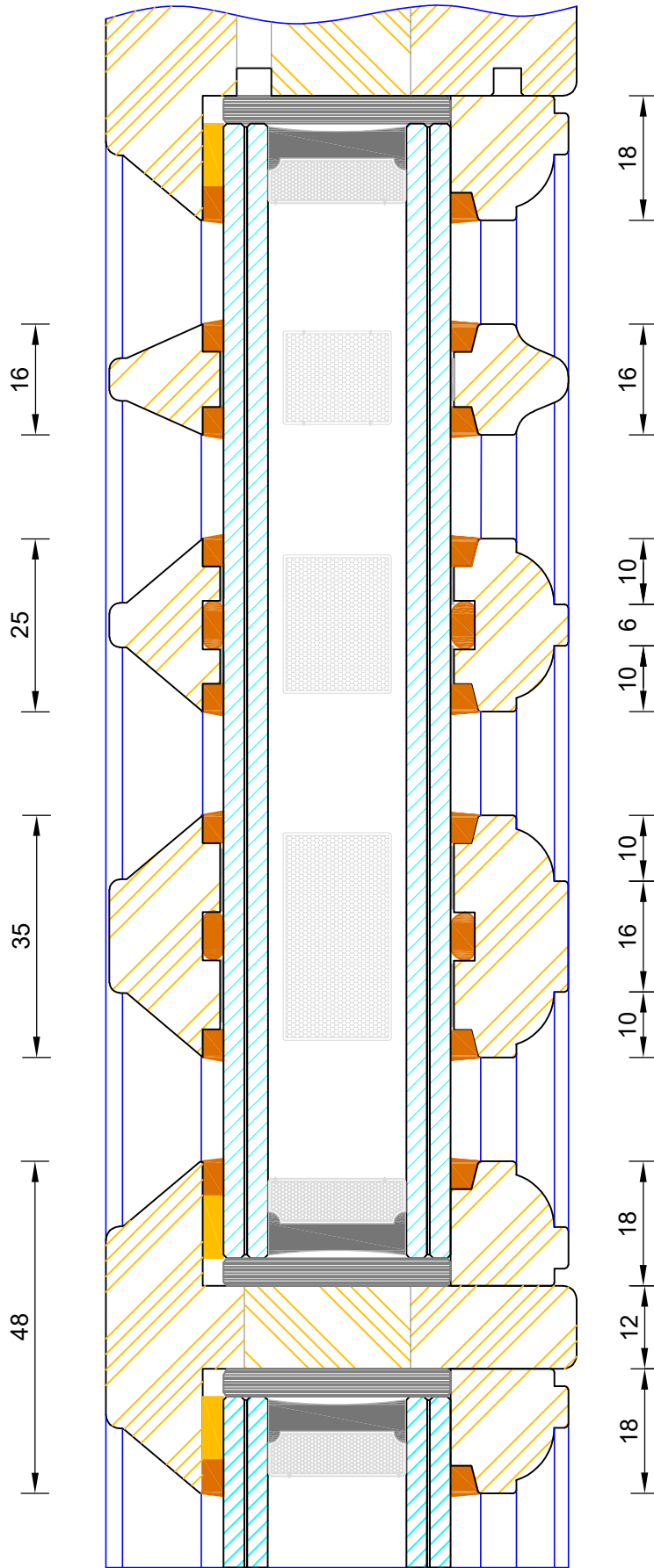


**Traditional Open Out Flush French Door
Cill Extension Options**

DIMENSIONS	PLOT SIZE	SCALE	DATE	REV	DWG NO.
MM	A4	1:1	25.09.2019	B	2501

Please consider the environment before printing

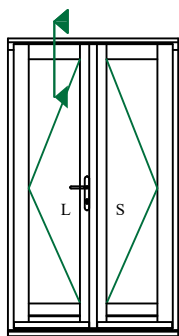
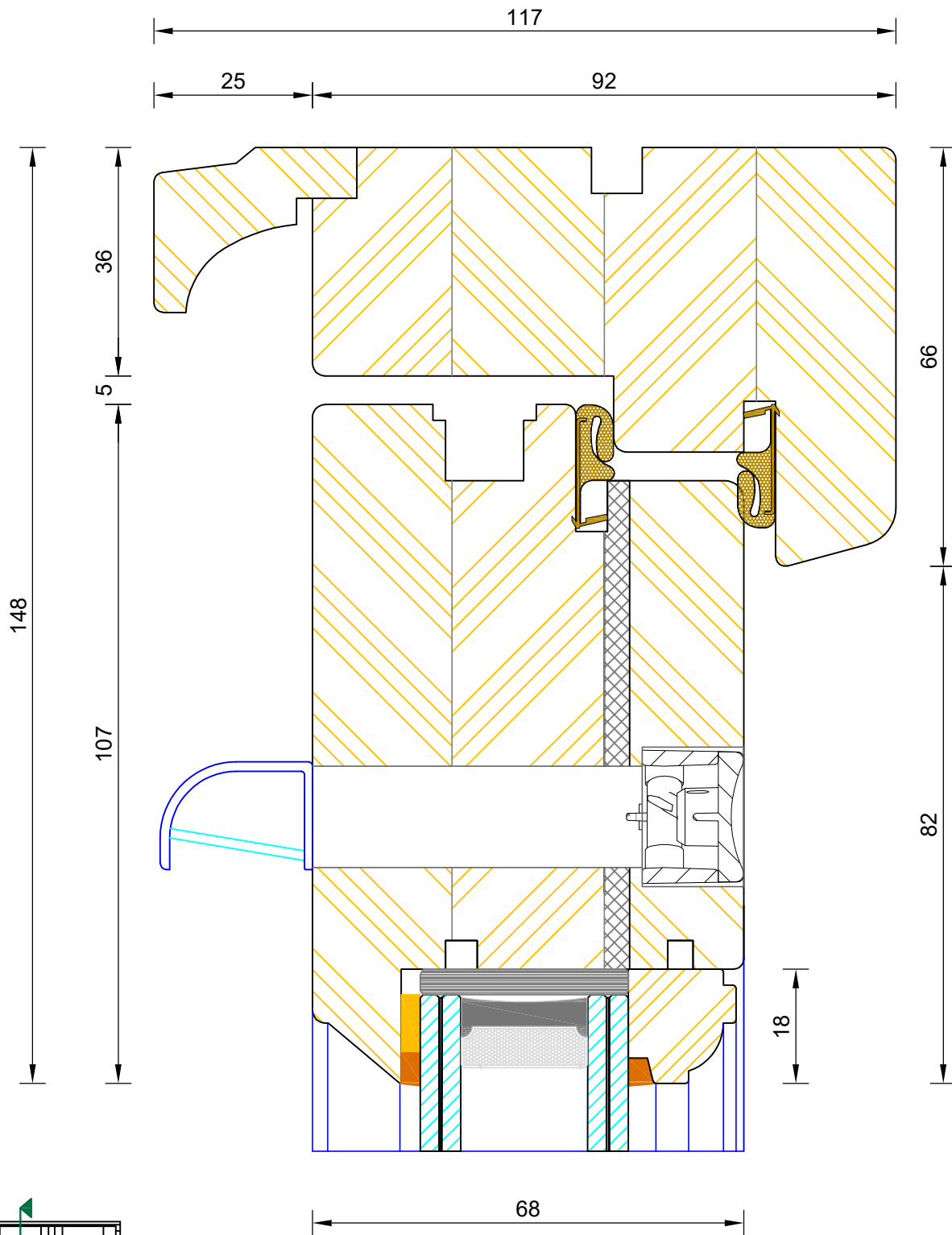


Bereco

**Traditional Open Out Flush French Door
Bar Options**

DIMENSIONS	PLOT SIZE	SCALE	DATE	REV	DWG NO.
MM	A4	1:1	01.01.2019	B	2502

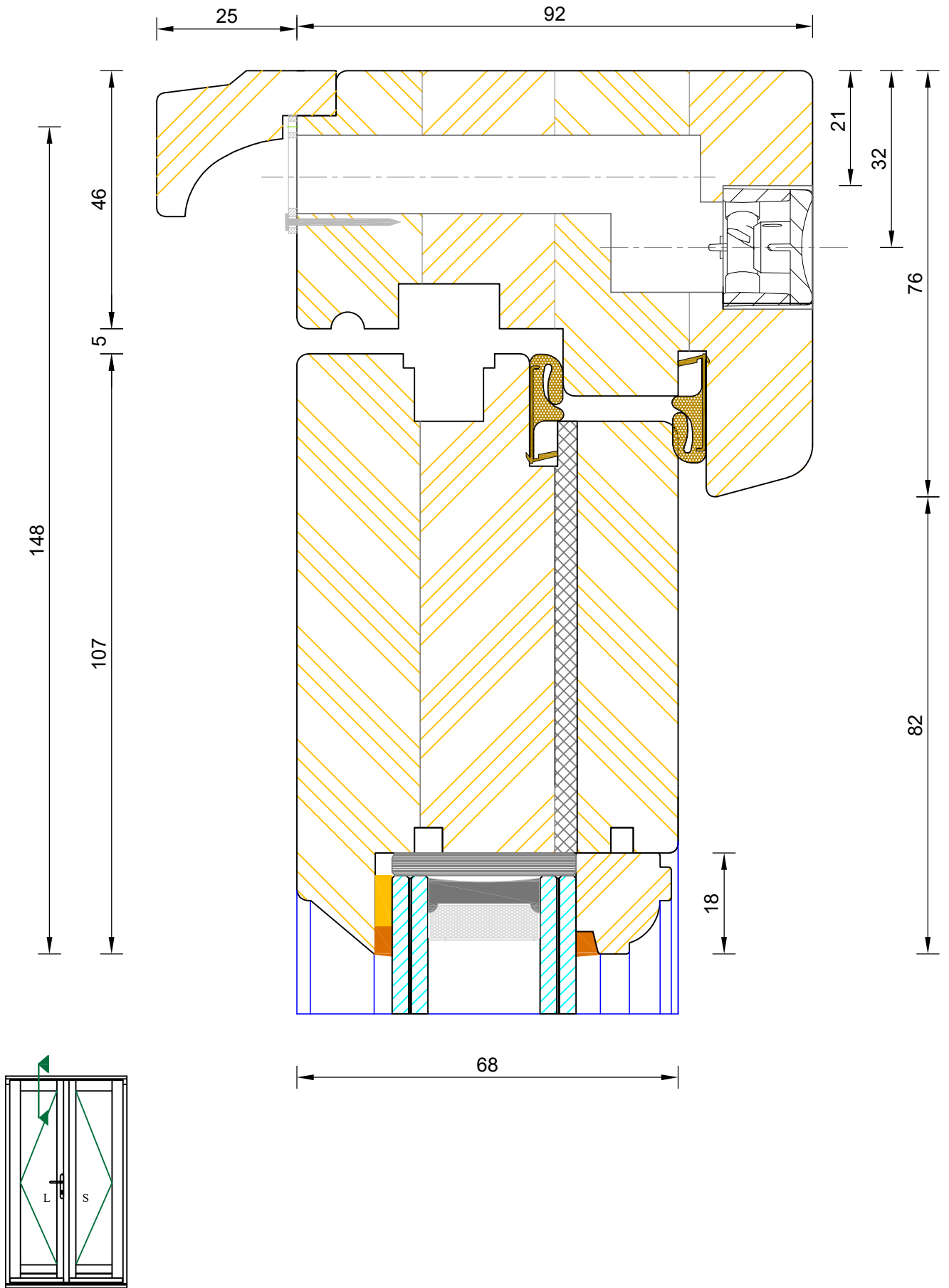
Please consider the environment before printing



**Traditional Open Out Flush French Door
Frame & Leaf Head (Standard - Vent in Top Rail)**

DIMENSIONS	PLOT SIZE	SCALE	DATE	REV	DWG NO.
MM	A4	1:1	02.08.2022	C	2503

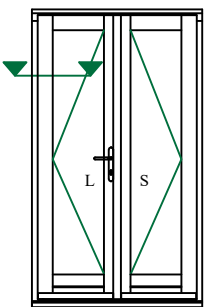
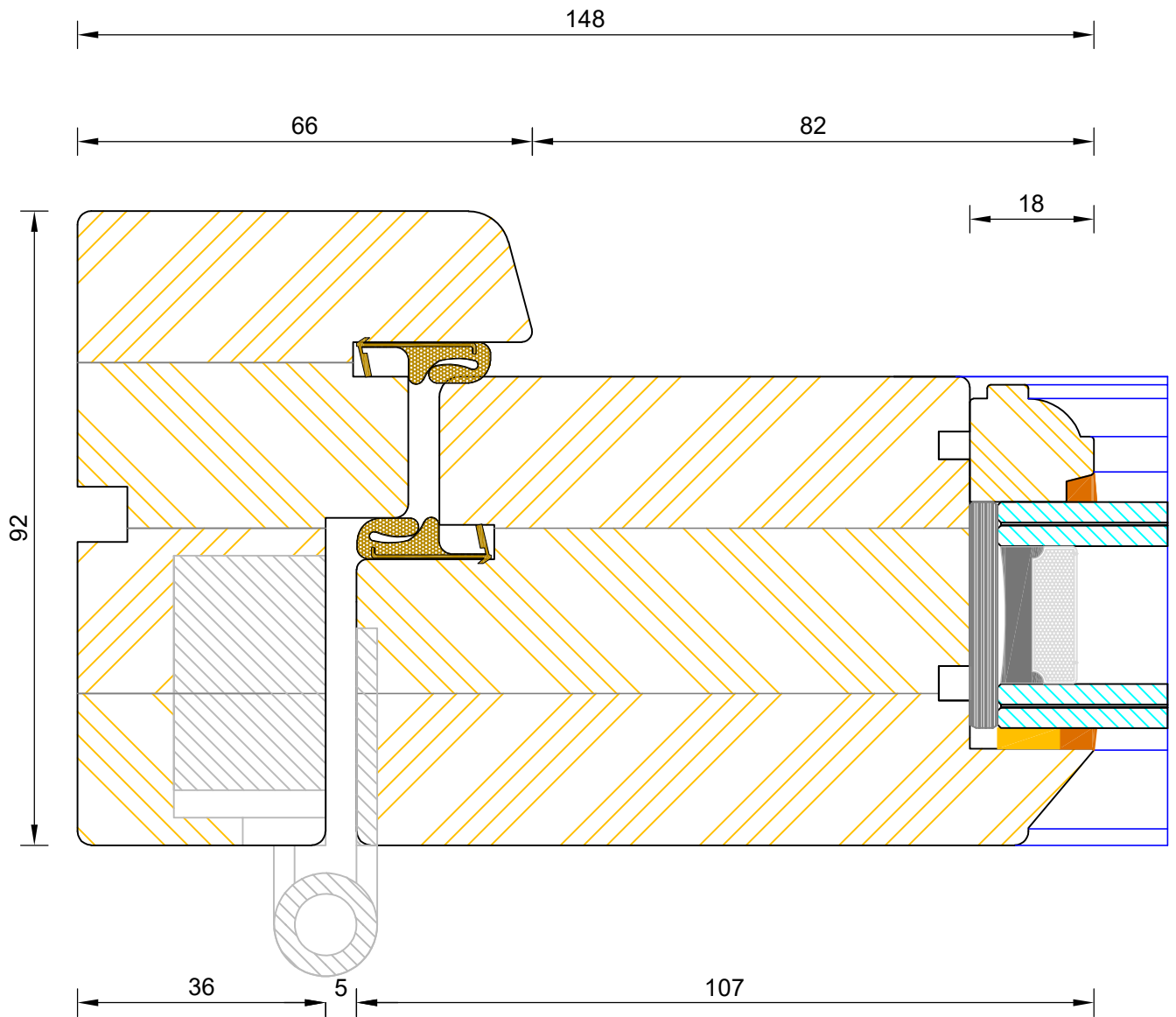
Please consider the environment before printing



**Traditional Open Out Flush French Door
Frame & Leaf Head (Optional - Vent in Frame Head)**

DIMENSIONS	PLOT SIZE	SCALE	DATE	REV	DWG NO.
MM	A4	1:1	02.08.2022	C	2503.1

Please consider the environment before printing



**Traditional Open Out Flush French Door
Frame & leaf Jamb**

DIMENSIONS	PLOT SIZE	SCALE	DATE	REV	DWG NO.
MM	A4	1:1	02.08.2022	B	2504

Please consider the environment before printing

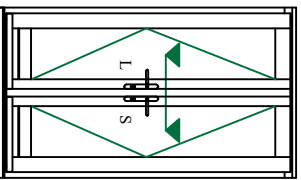
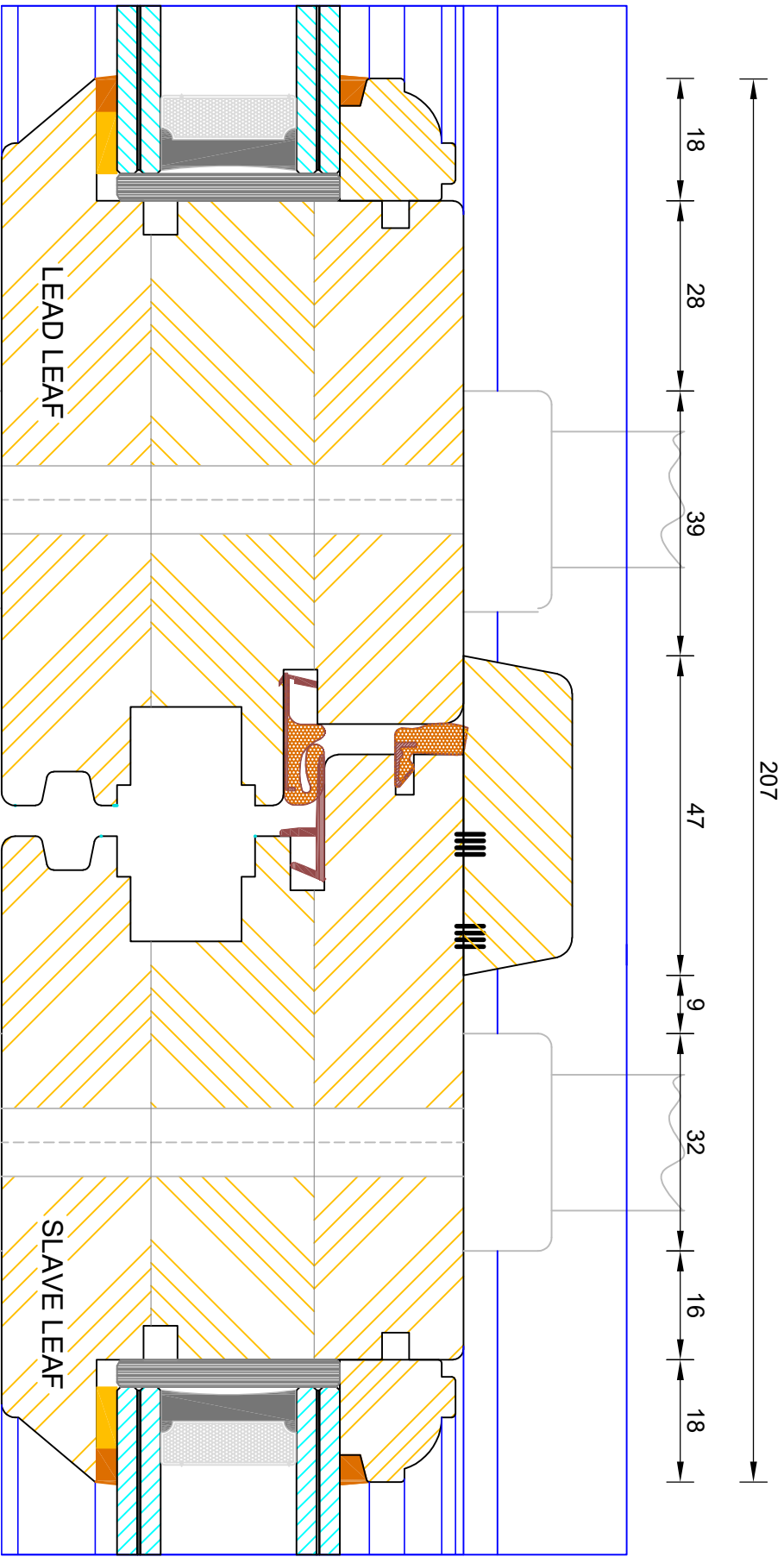


Berenco

Traditional Open Out Flush French Door Flying Mullion (Double Handle)

DIMENSIONS	PLOT SIZE	SCALE	DATE	REV	DWG NO.
MM	A4	1:1	02.08.2022	B	2505

Please consider the environment before printing



Note: Used as standard on doors >2301mm high



Berenco

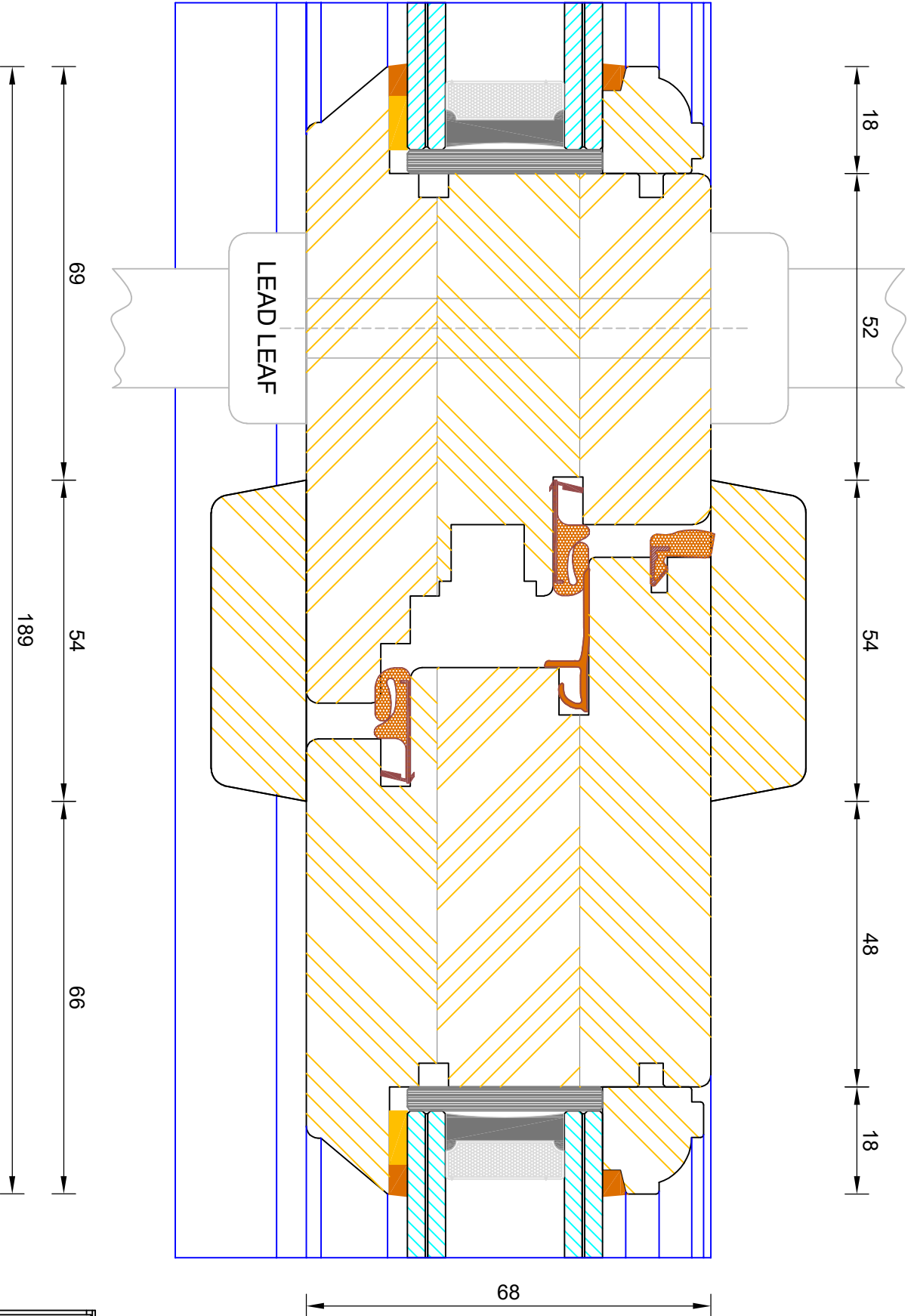
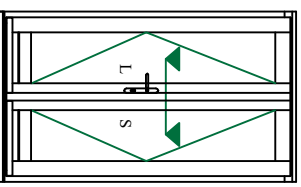
Traditional Open Out Flush French Door Flying Mullion (Single Handle)

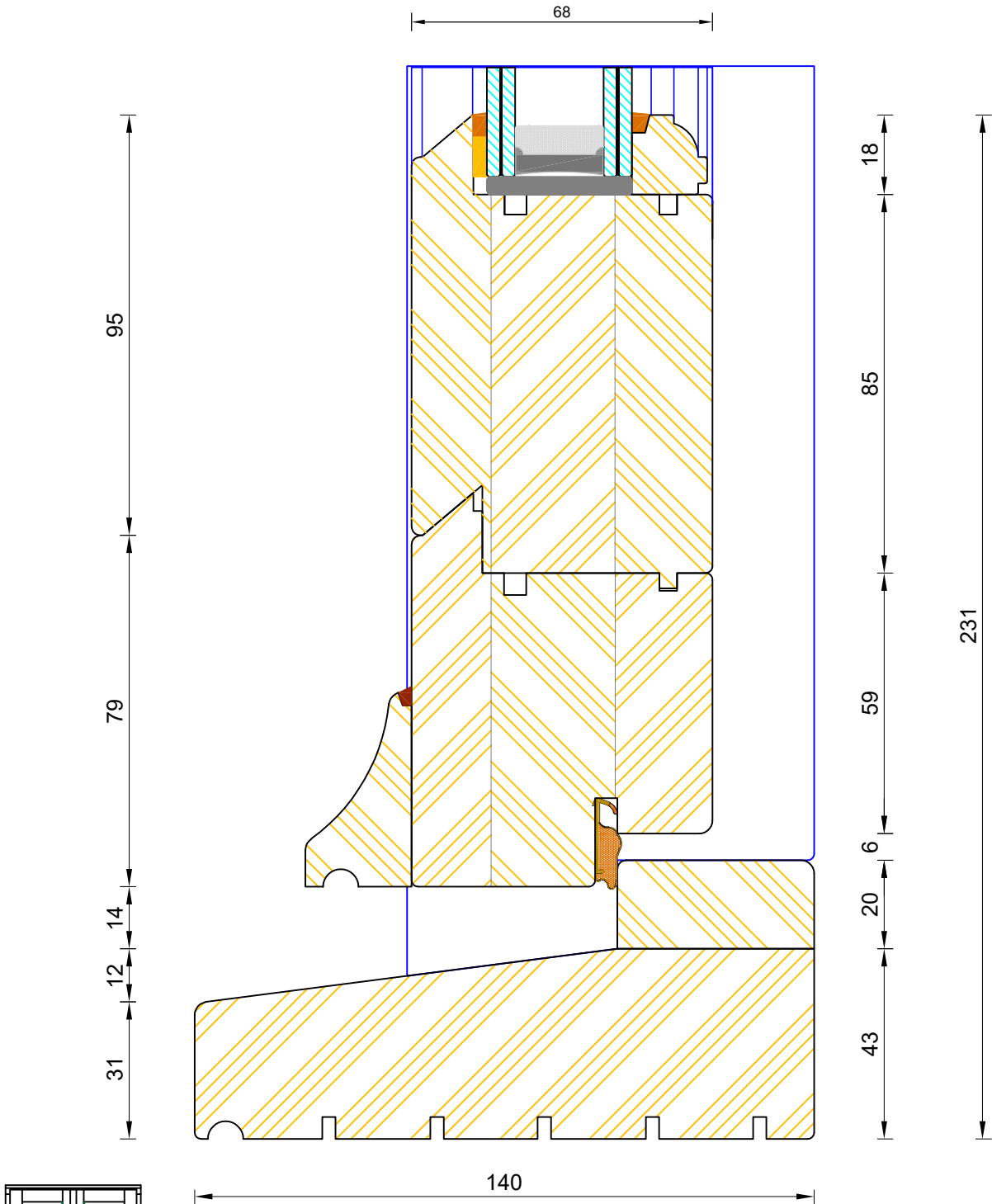
DIMENSIONS	PLOT SIZE	SCALE	DATE	REV	DWG NO.
MM	A4	1:1	02.08.2022	B	2505.1

Please consider the environment before printing

2505.1

Note: Used as standard on doors <2300mm high unless otherwise specified



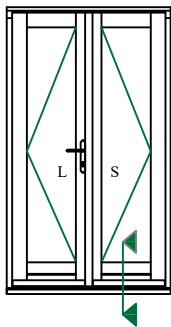
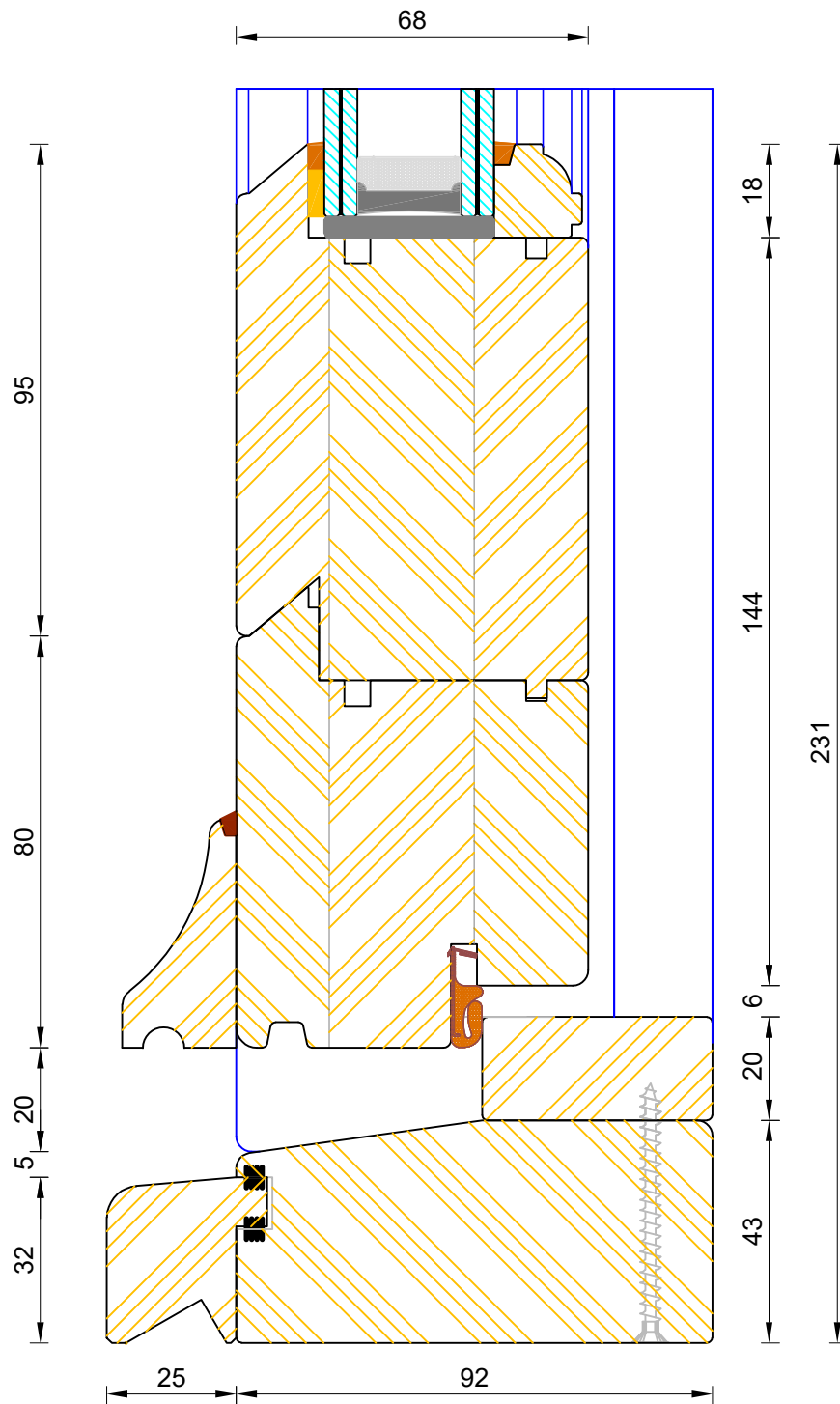


If not otherwise stated, Hardwood Threshold will be stained 5064 Walnut.



Traditional Open Out Flush French Door Standard Thresh

DIMENSIONS	PLOT SIZE	SCALE	DATE	REV	DWG NO.
MM	A3	1:1	02.08.2022	B	2506
Please consider the environment before printing					




CILL EXTENSION - available options: 25mm (117mm o/a) / 47mm (139mm o/a) / 62mm (154mm o/a) / 87mm (179mm o/a) / 114mm (206mm o/a) / 125mm (217mm o/a) / 140mm (232mm o/a)

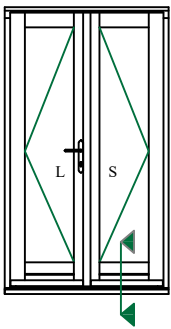
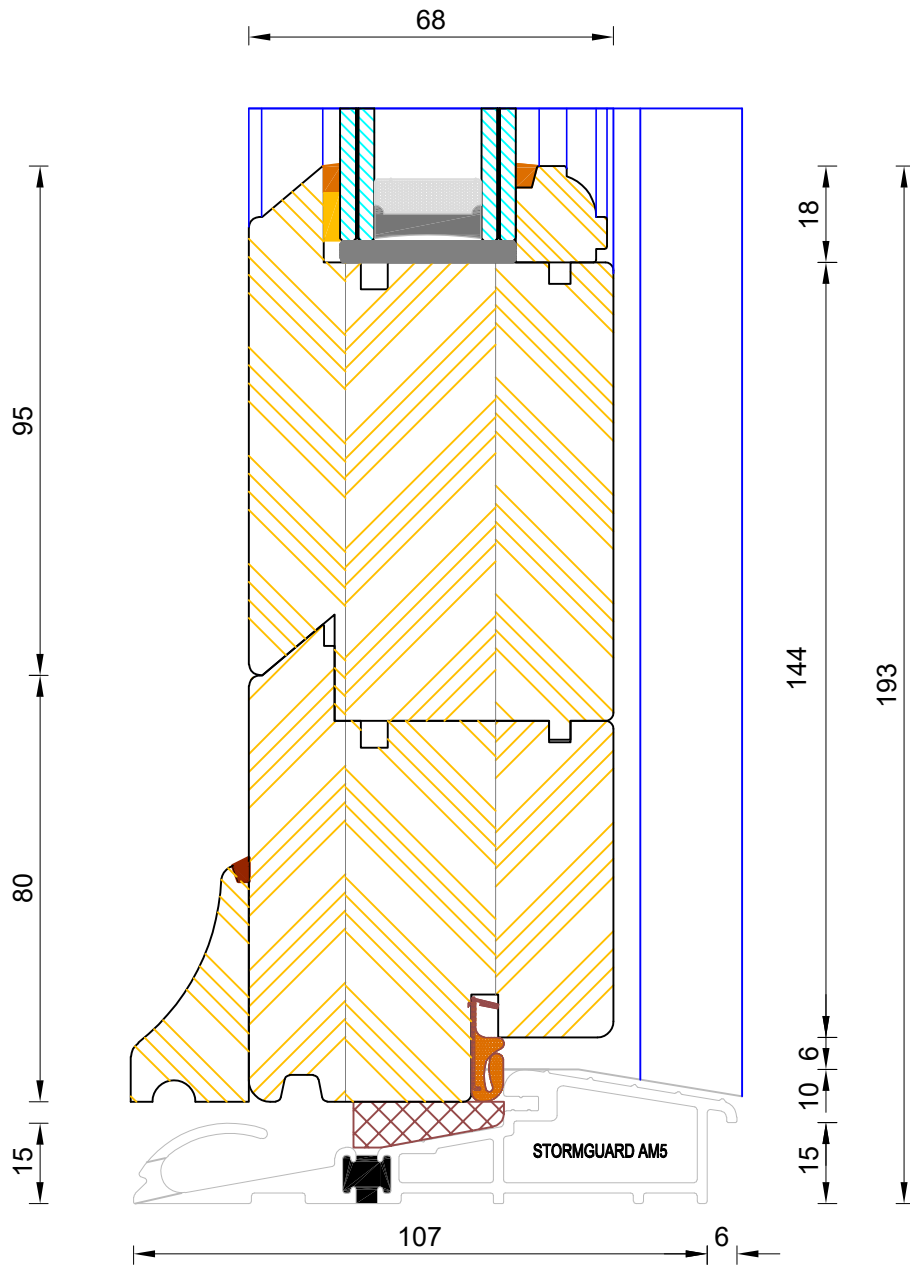
NOTE: Cill Extensions should be supported from underneath; the maximum overhang over Brick / Blockwork for cill extension should not exceed 25mm in order to avoid damage when stepped on. Warranties are invalidated when fitted with overhang in excess to that.

If not otherwise stated, Hardwood Threshold will be stained 5064 Walnut.



Traditional Open Out Flush French Door Coupling Thresh

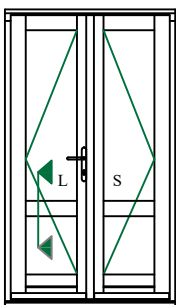
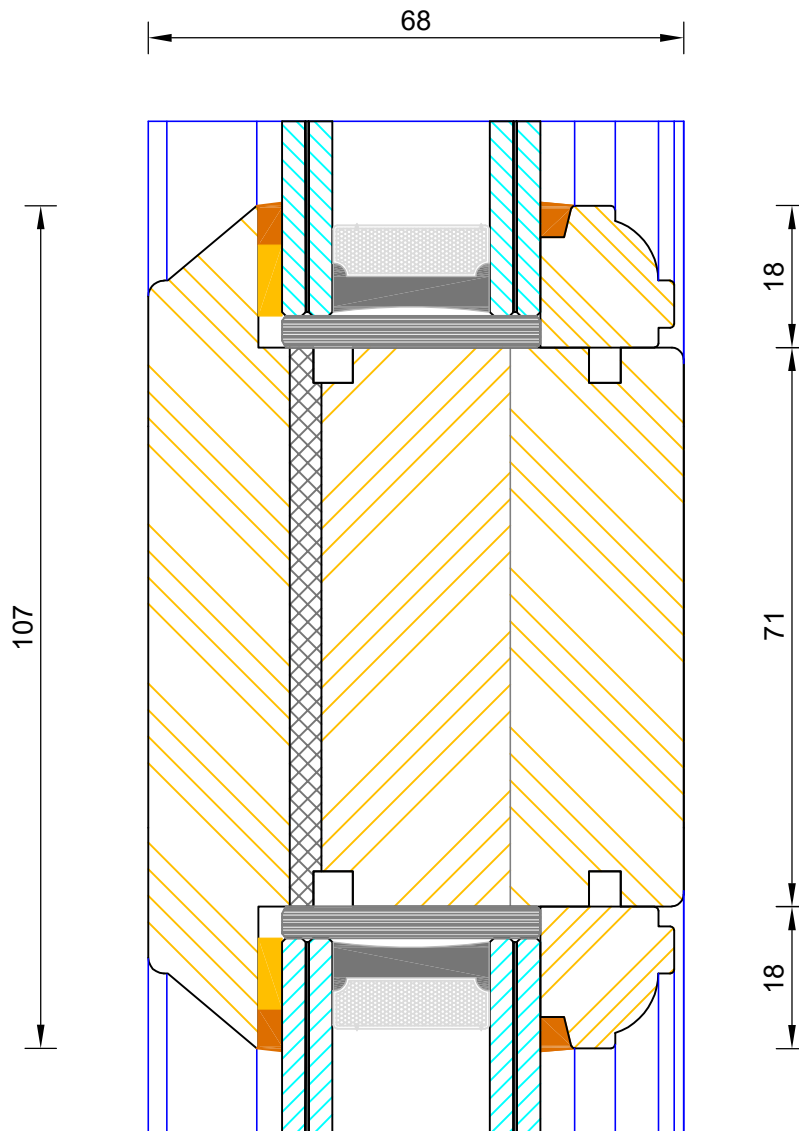
DIMENSIONS	PLOT SIZE	SCALE	DATE	REV	DWG NO.
MM	A3	1:1	02.08.2022	B	2507
 Please consider the environment before printing					



Traditional Open Out Flush French Door Mobility Thresh

DIMENSIONS	PLOT SIZE	SCALE	DATE	REV	DWG NO.
MM	A3	1:1	02.08.2022	B	2508

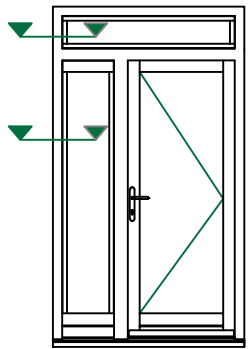
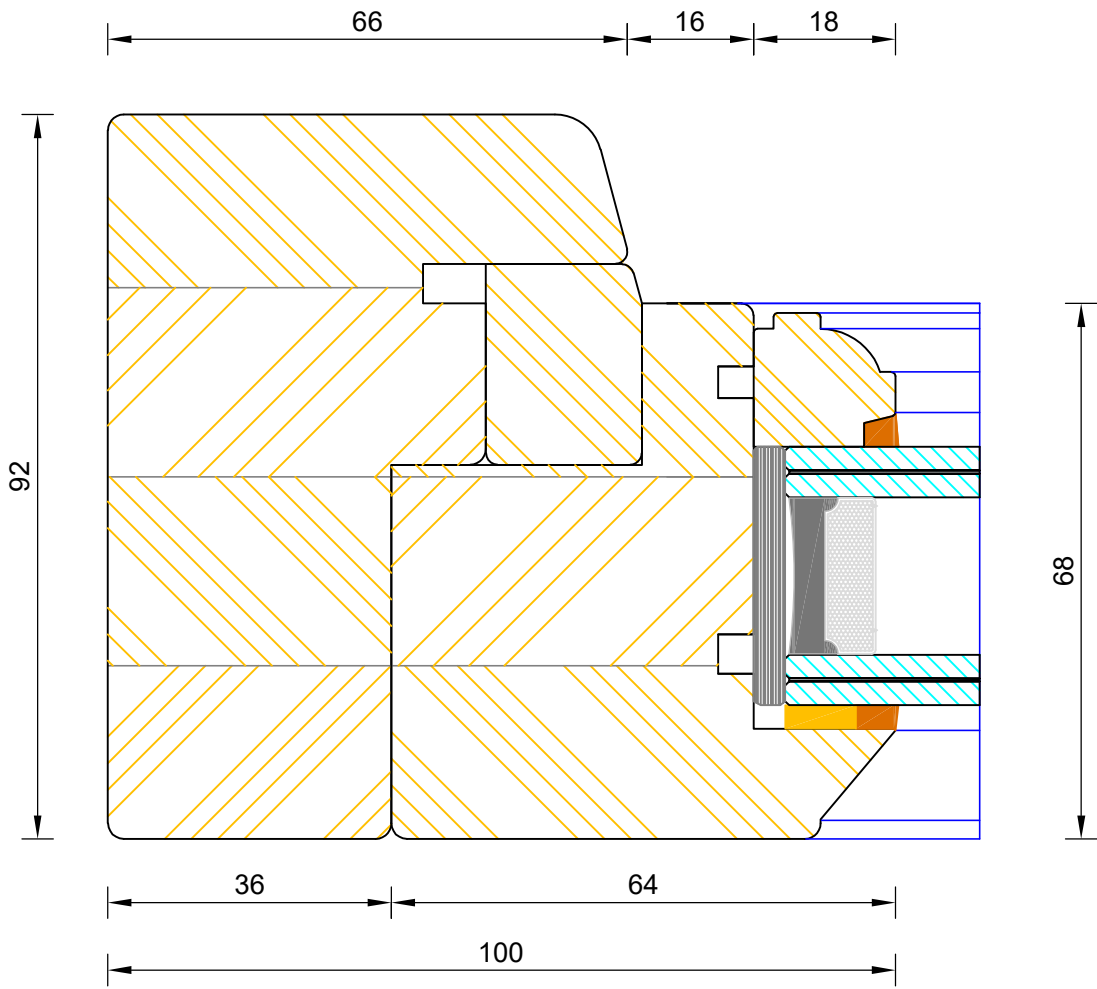
Please consider the environment before printing



**Traditional Open Out Flush French Door
Mid Rail**

DIMENSIONS	PLOT SIZE	SCALE	DATE	REV	DWG NO.
MM	A4	1:1	02.08.2022	B	2509

Please consider the environment before printing



**Traditional Open Out Flush French Door
Sidelight / Fanlight Jamb**

DIMENSIONS	PLOT SIZE	SCALE	DATE	REV	DWG NO.
MM	A4	1:1	02.08.2022	B	2510

Please consider the environment before printing



Berenco

Traditional Open Out Flush French Door Solid Mullion

DIMENSIONS	PLOT SIZE	SCALE	DATE	REV	DWG NO.
MM	A4	1:1	02.08.2022	B	2511

Please consider the environment before printing

