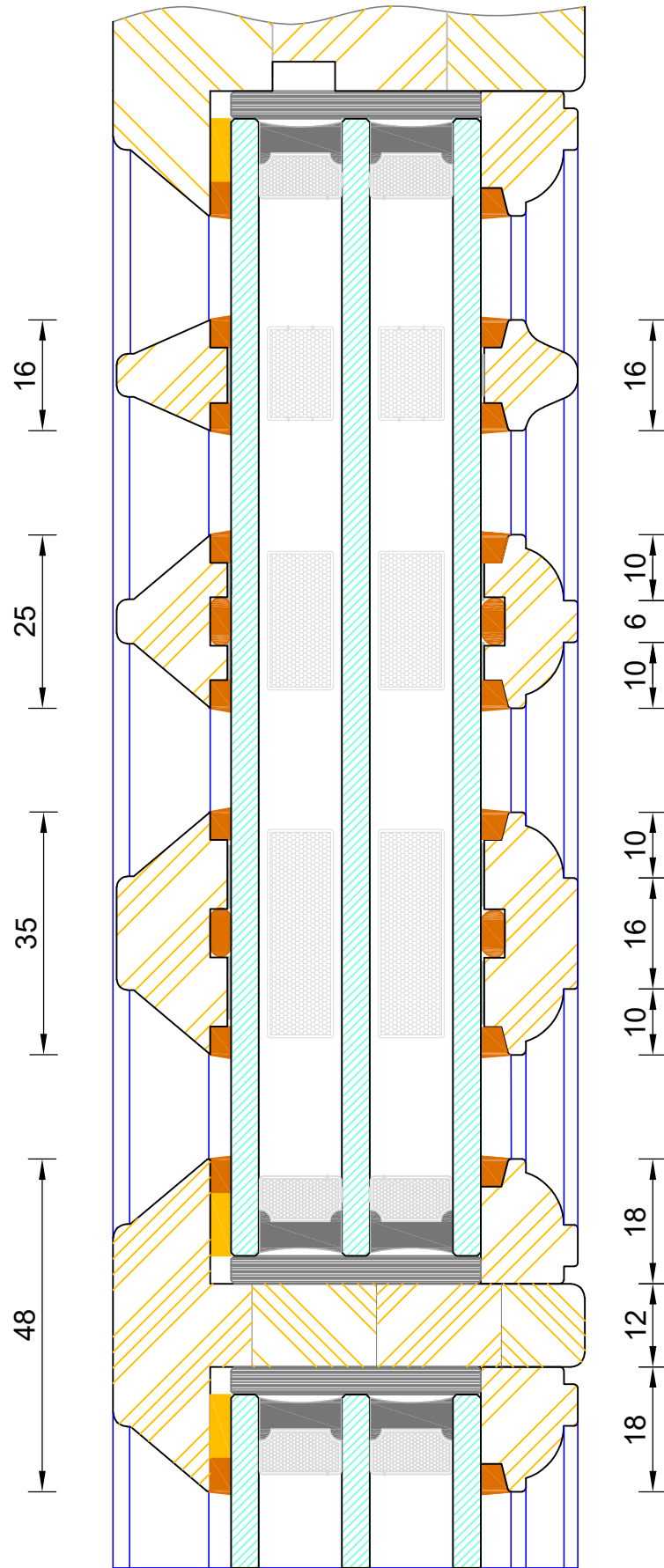


Traditional Open Out Flush French Door
Triple Glazed - Cill Extension Options

DIMENSIONS	PLOT SIZE	SCALE	DATE	REV	DWG NO.
MM	A4	1:1	25.09.2019	B	2550

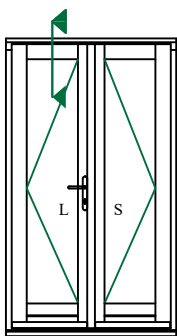
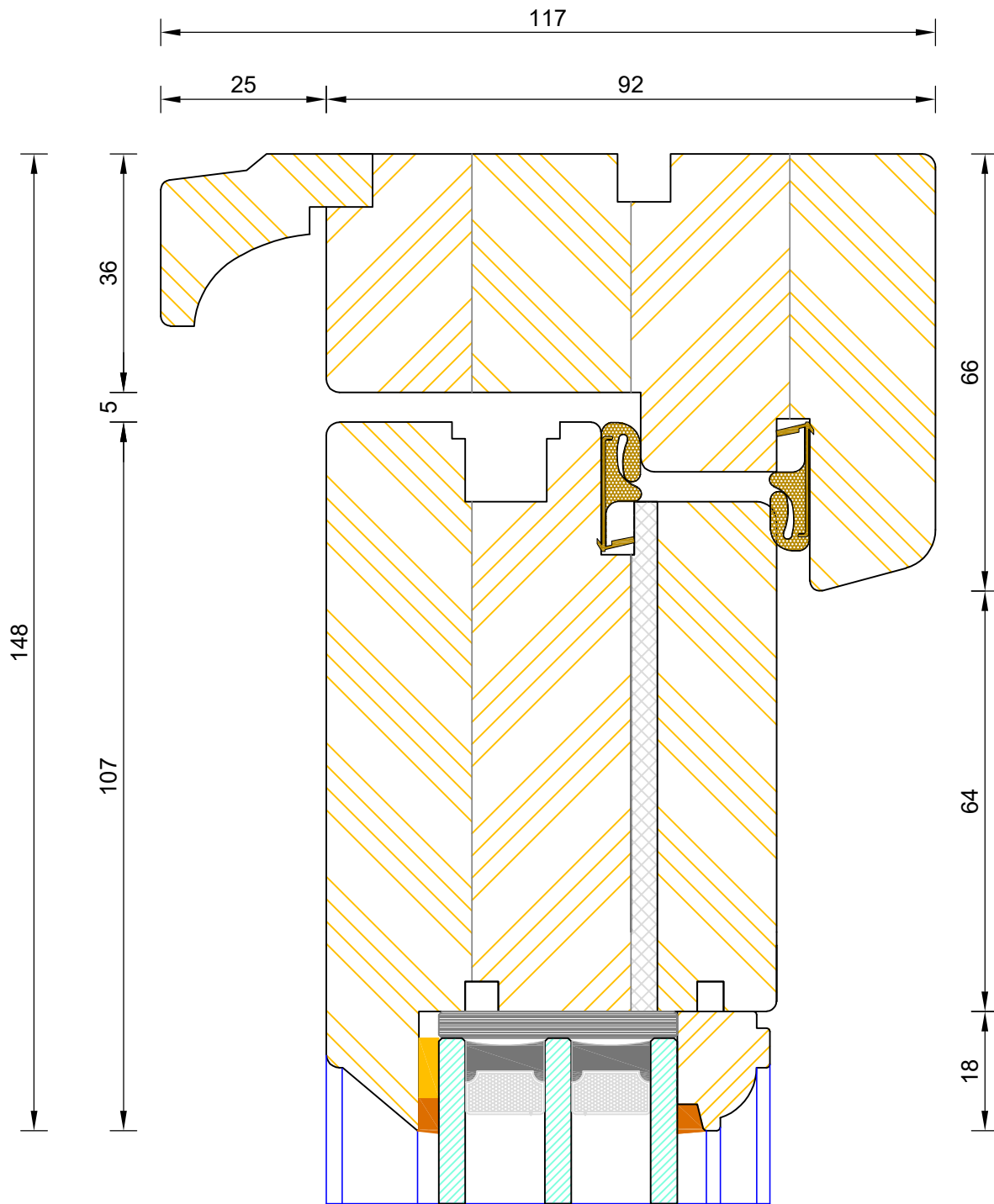
Please consider the environment before printing



**Traditional Open Out Flush French Door
Triple Glazed - Bar Options**

DIMENSIONS	PLOT SIZE	SCALE	DATE	REV	DWG NO.
MM	A4	1:1	01.01.2019	B	2551

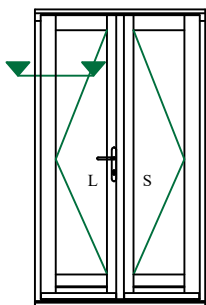
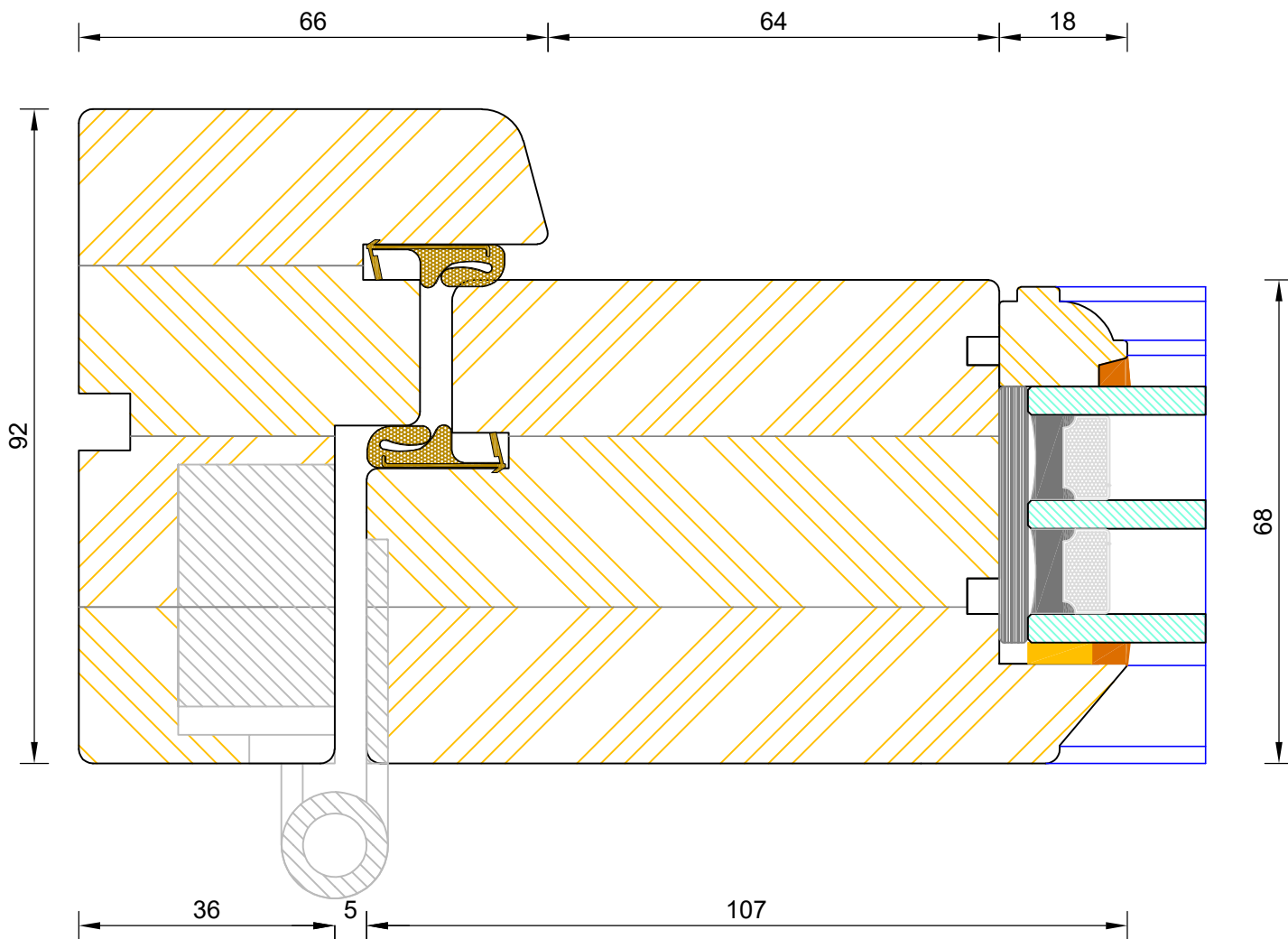
Please consider the environment before printing



Traditional Open Out Flush French Door
Triple Glazed - Frame & Leaf Head

DIMENSIONS	PLOT SIZE	SCALE	DATE	REV	DWG NO.
MM	A4	1:1	02.08.2022	B	2552

Please consider the environment before printing



Traditional Open Out Flush French Door
Triple Glazed - Frame & leaf Jamb

DIMENSIONS	PLOT SIZE	SCALE	DATE	REV	DWG NO.
MM	A4	1:1	02.08.2022	B	2553

Please consider the environment before printing

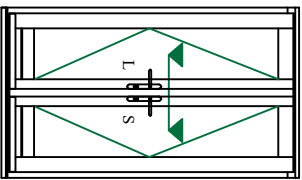
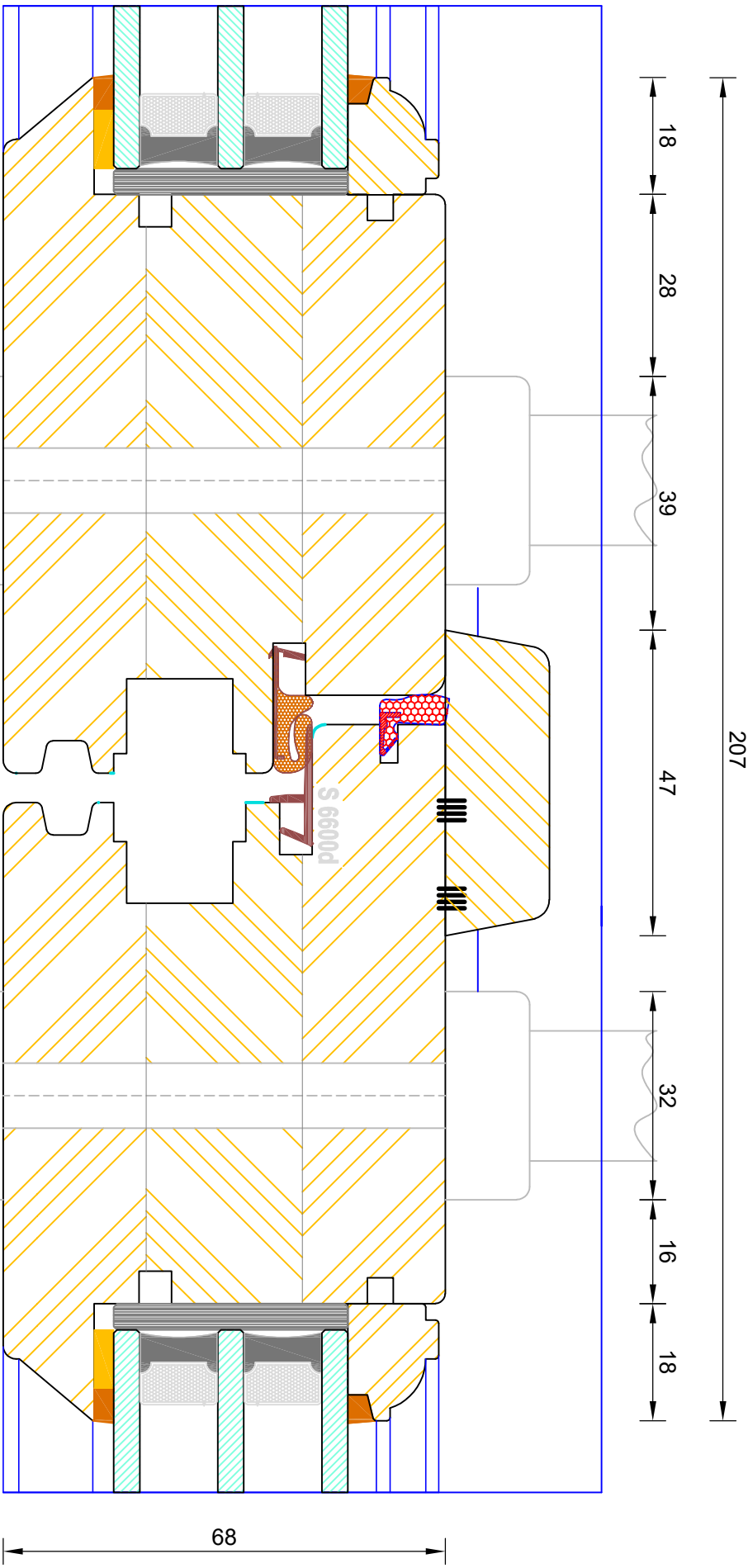


Bereco

Traditional Open Out Flush French Door Triple Glazed - Flying Mullion (Double Handle)

DIMENSIONS	PLOT SIZE	SCALE	DATE	REV	DWG NO.
MM	A1	1:1	02.08.2022	B	2554

Please consider the environment before printing



Note: Used as standard on doors >2301mm high

2554

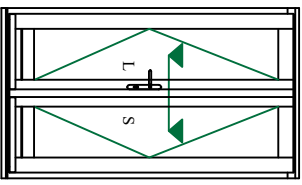
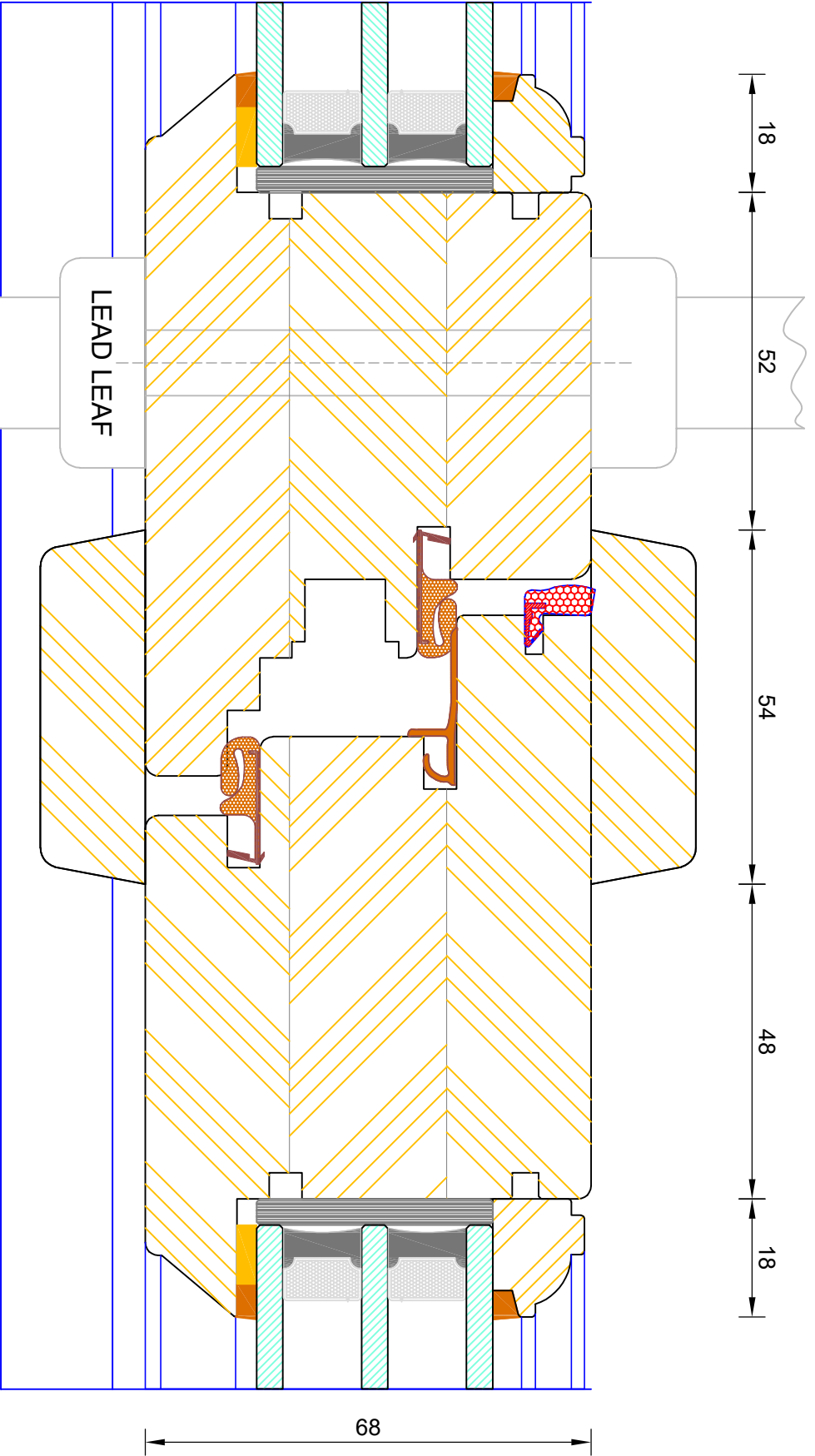


Berenco

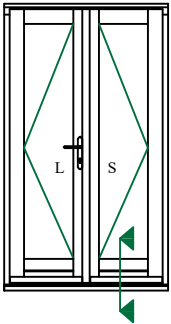
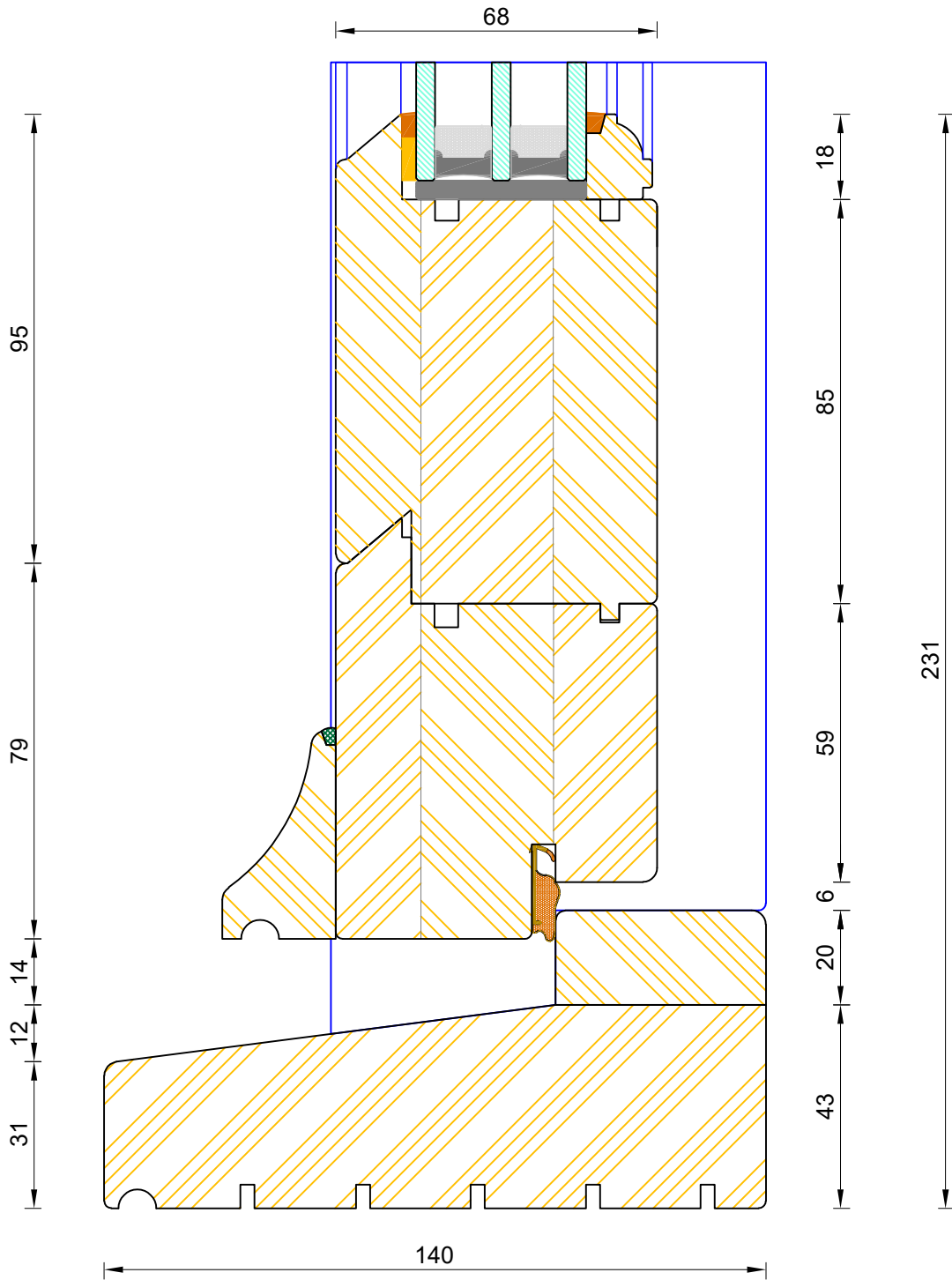
Traditional Open Out Flush French Door Triple Glazed - Flying Mullion (Single Handle)

DIMENSIONS	PLOT SIZE	SCALE	DATE	REV	DWG NO.
MM	A1	1:1	02.08.2022	B	2554.1

Please consider the environment before printing



Note: Used as standard on doors <2300mm high unless otherwise specified

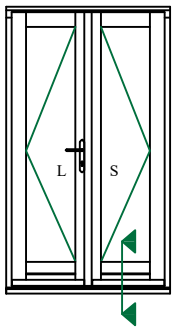
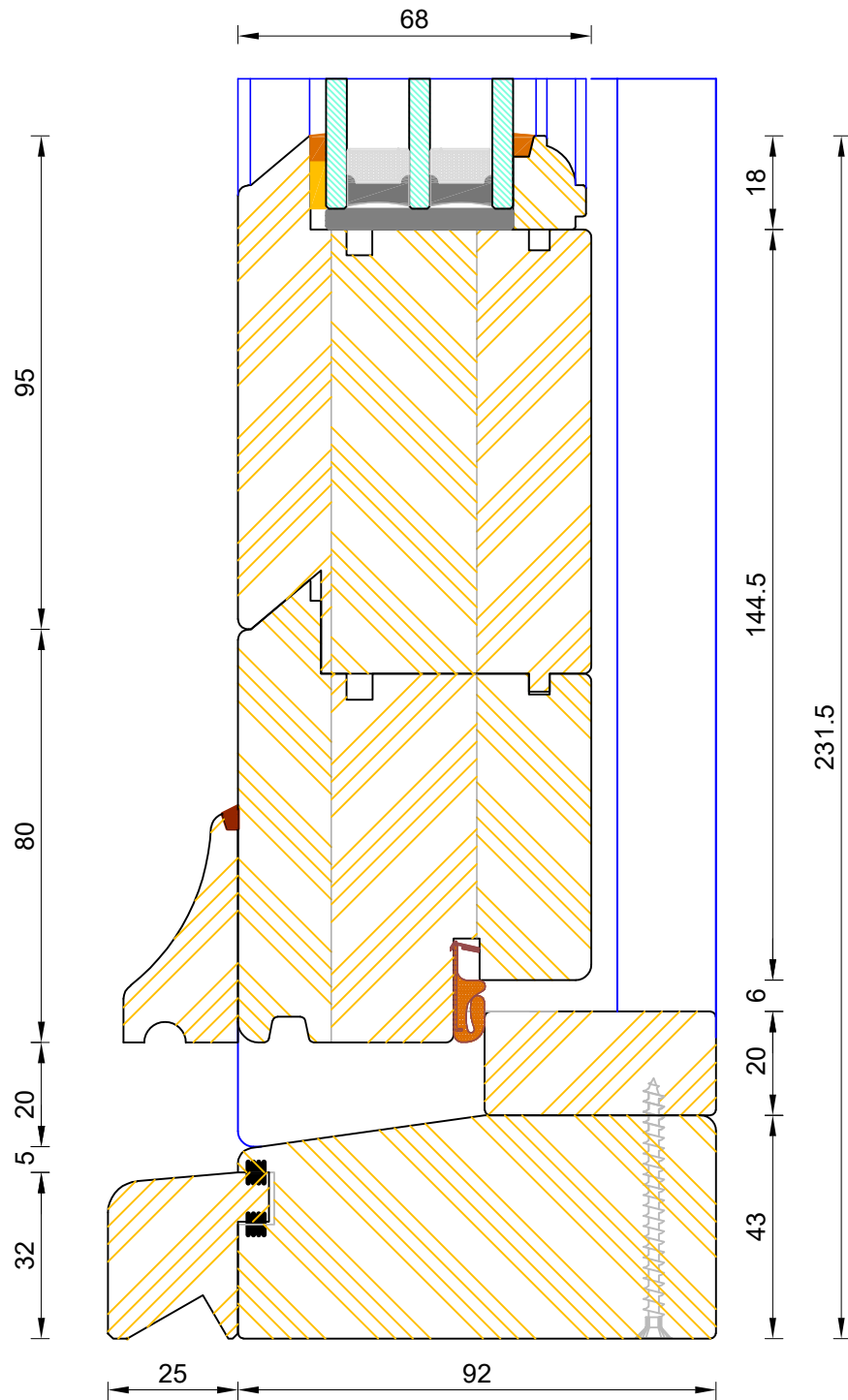


If not otherwise stated, Hardwood Threshold will be stained 5064 Walnut.



Traditional Open Out Flush French Door
Triple Glazed - Standard Thresh

DIMENSIONS	PLOT SIZE	SCALE	DATE	REV	DWG NO.
MM	A3	1:1	02.08.2022	B	2555
Please consider the environment before printing					



CILL EXTENSION - available options: 25mm (117mm o/a) / 47mm (139mm o/a) / 62mm (154mm o/a) / 87mm (179mm o/a) / 114mm (206mm o/a) / 125mm (217mm o/a) / 140mm (232mm o/a)

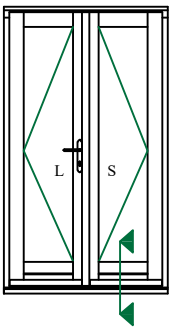
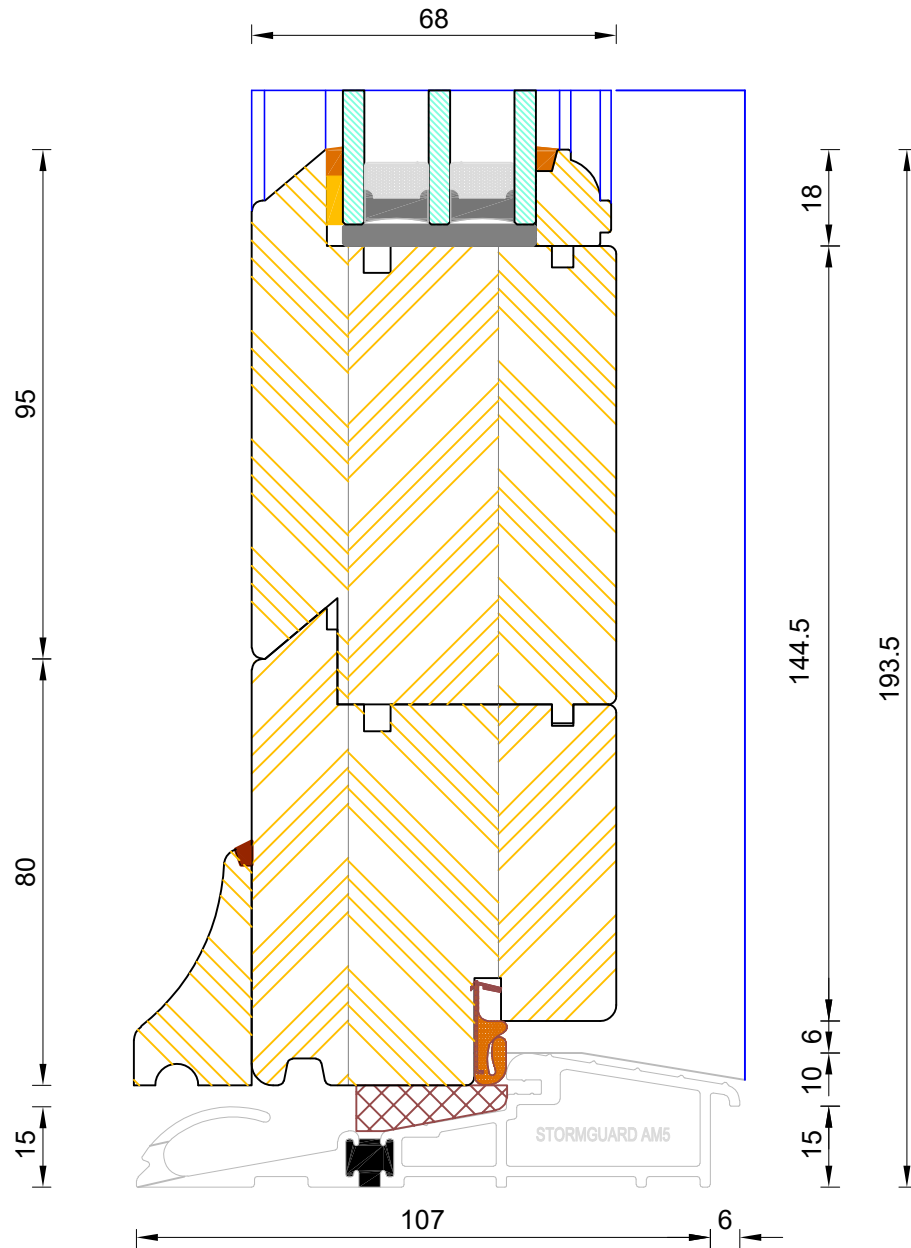
NOTE: Cill Extensions should be supported from underneath; the maximum overhang over Brick / Blockwork for cill extension should not exceed 25mm in order to avoid damage when stepped on. Warranties are invalidated when fitted with overhang in excess to that.

If not otherwise stated, Hardwood Threshold will be stained 5064 Walnut.



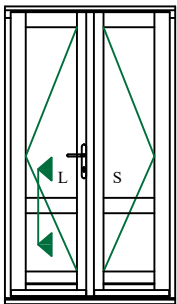
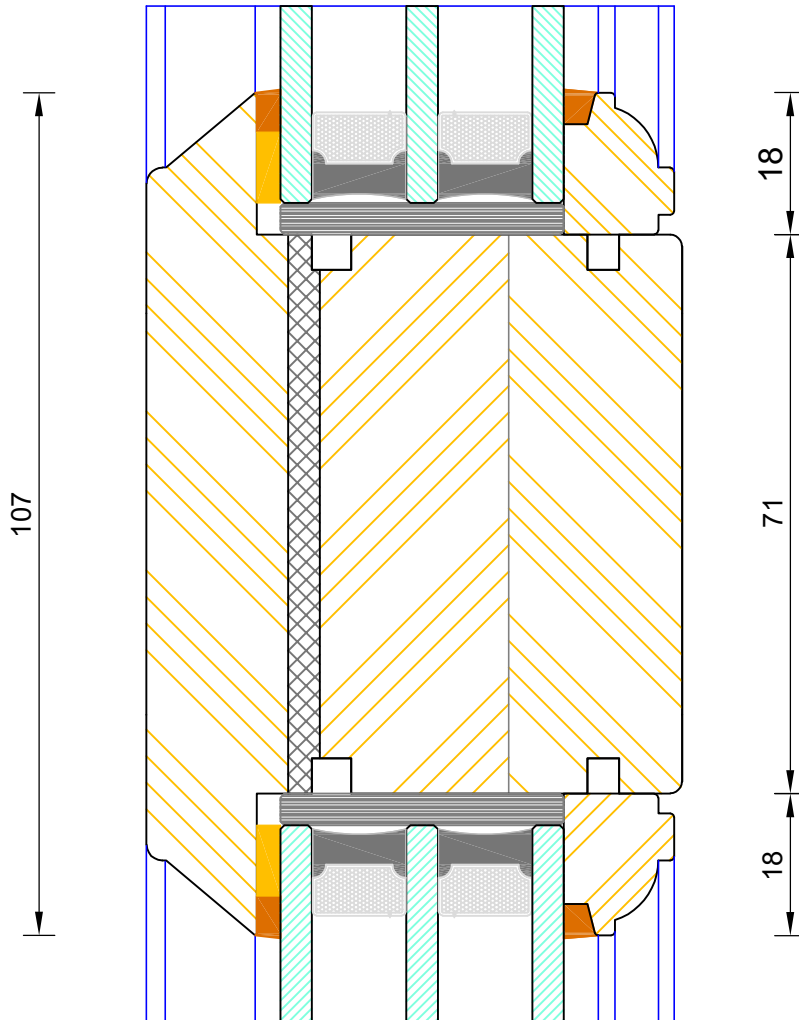
Traditional Open Out Flush French Door
Triple Glazed - Coupling Threshold

DIMENSIONS	PLOT SIZE	SCALE	DATE	REV	DWG NO.
MM	A3	1:1	02.08.2022	B	2556
Please consider the environment before printing					



Traditional Open Out Flush French Door
Triple Glazed - Mobility Thresh

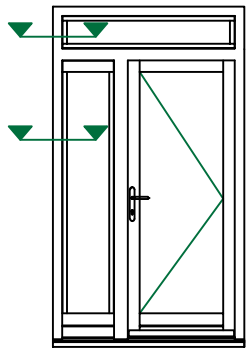
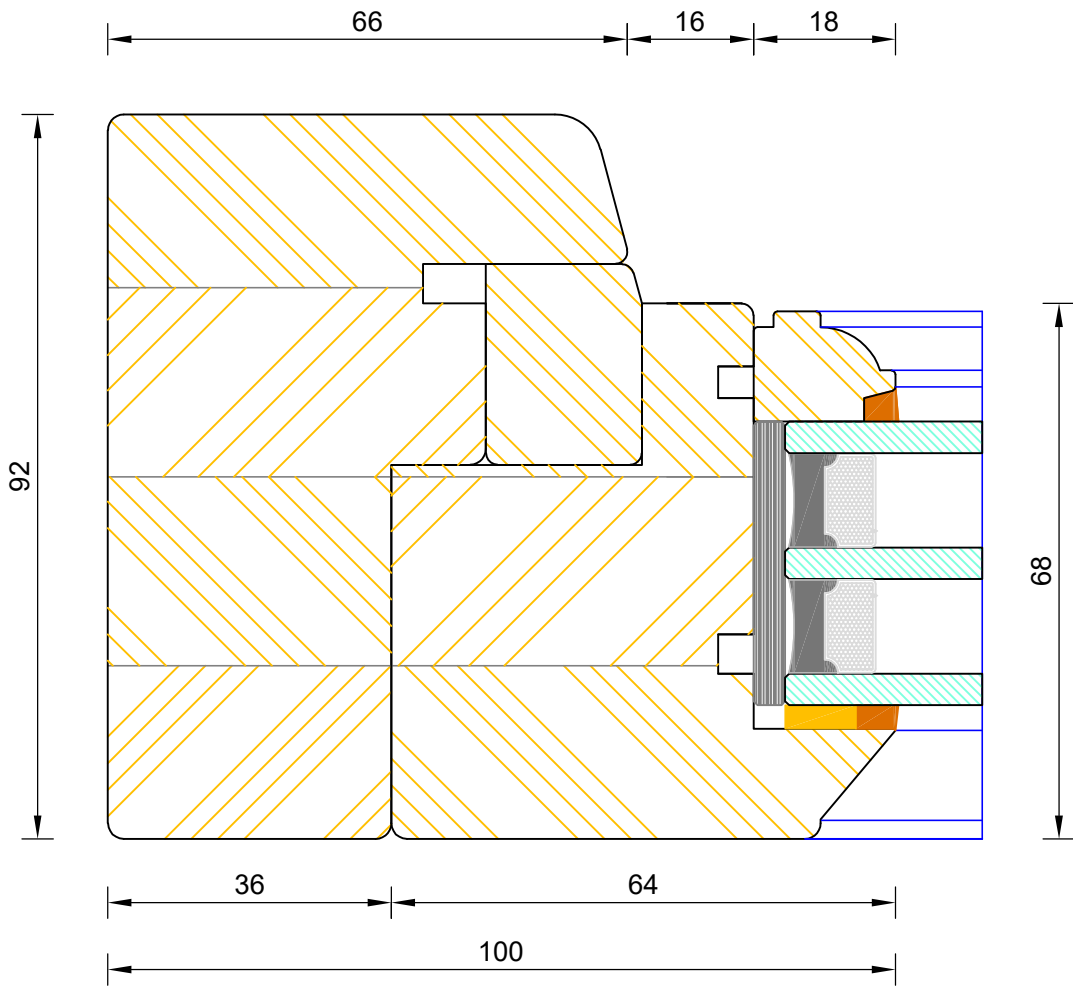
DIMENSIONS	PLOT SIZE	SCALE	DATE	REV	DWG NO.
MM	A3	1:1	02.08.2022	B	2557
Please consider the environment before printing					



**Traditional Open Out Flush French Door
Triple Glazed - Mid Rail**

DIMENSIONS	PLOT SIZE	SCALE	DATE	REV	DWG NO.
MM	A4	1:1	02.08.2022	B	2559

Please consider the environment before printing



Traditional Open Out Flush French Door
Triple Glazed - Sidelight / Fanlight Jamb

DIMENSIONS	PLOT SIZE	SCALE	DATE	REV	DWG NO.
MM	A4	1:1	02.08.2022	B	2560

Please consider the environment before printing





Berenco

Traditional Open Out Flush French Door Triple Glazed - Solid Mullion

DIMENSIONS	PLOT SIZE	SCALE	DATE	REV	DWG NO.
MM	A1	1:1	02.08.2022	B	2561

Please consider the environment before printing

