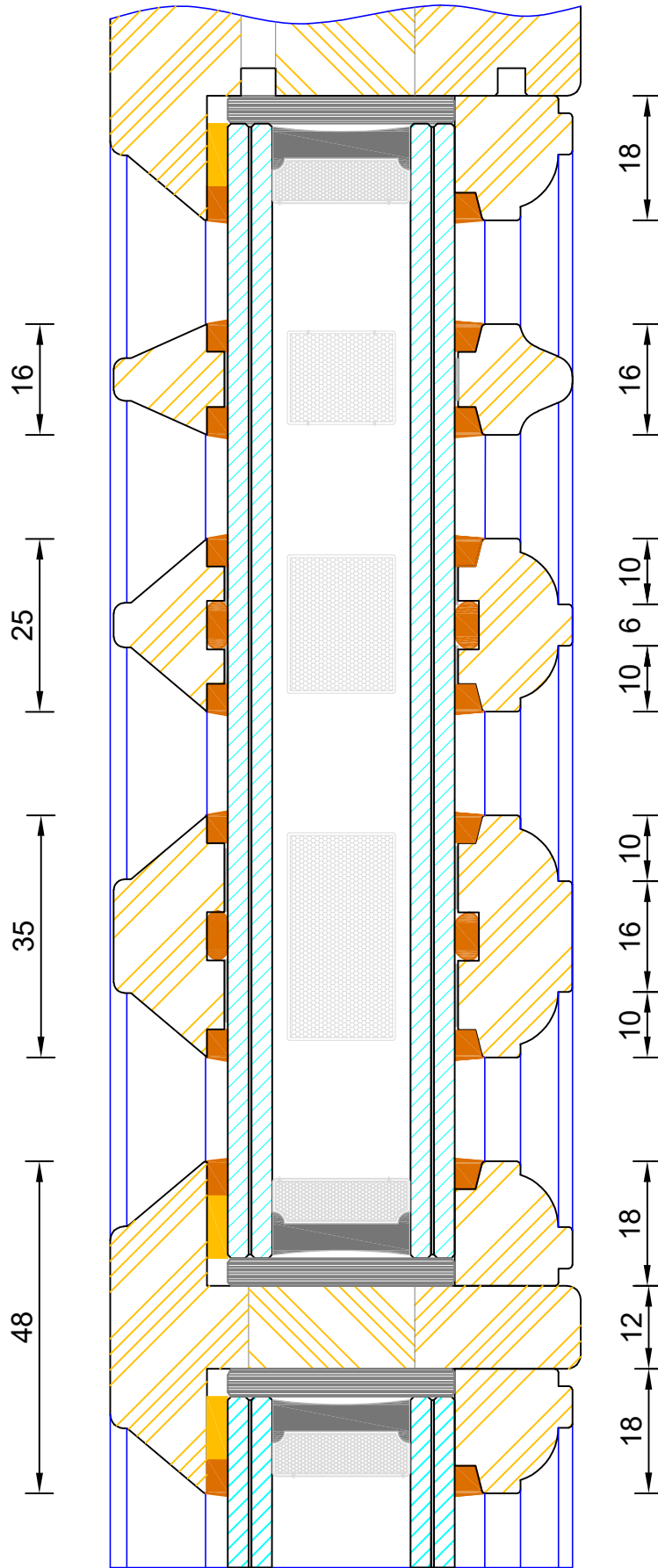


**Traditional Open In Flush French Door
Cill Extension Options**

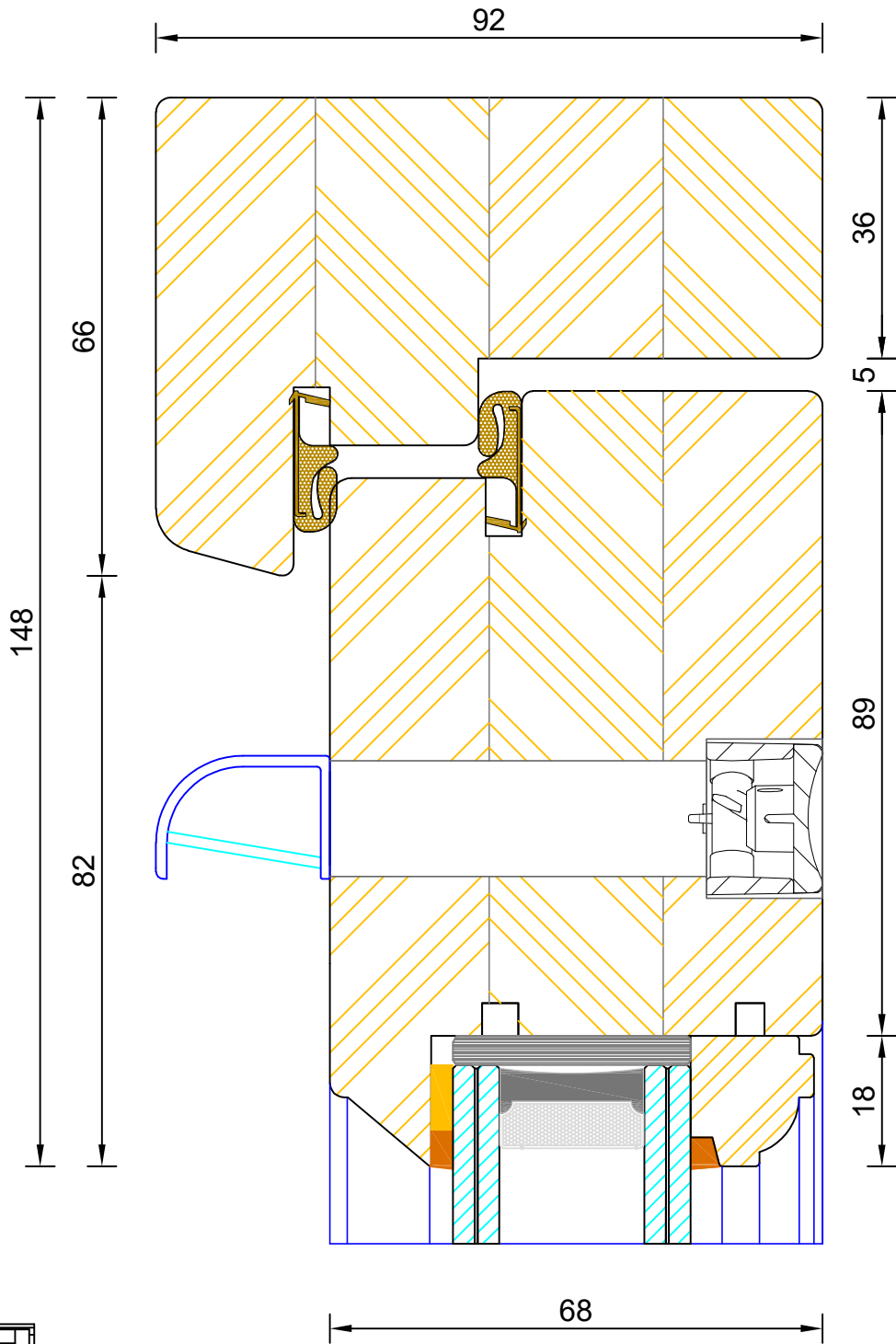
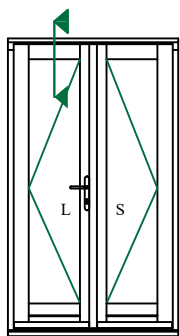
DIMENSIONS	PLOT SIZE	SCALE	DATE	REV	DWG NO.
MM	A4	1:1	25.09.2019	B	2601

Please consider the environment before printing



**Traditional Open In Flush French Door
Bar Options**

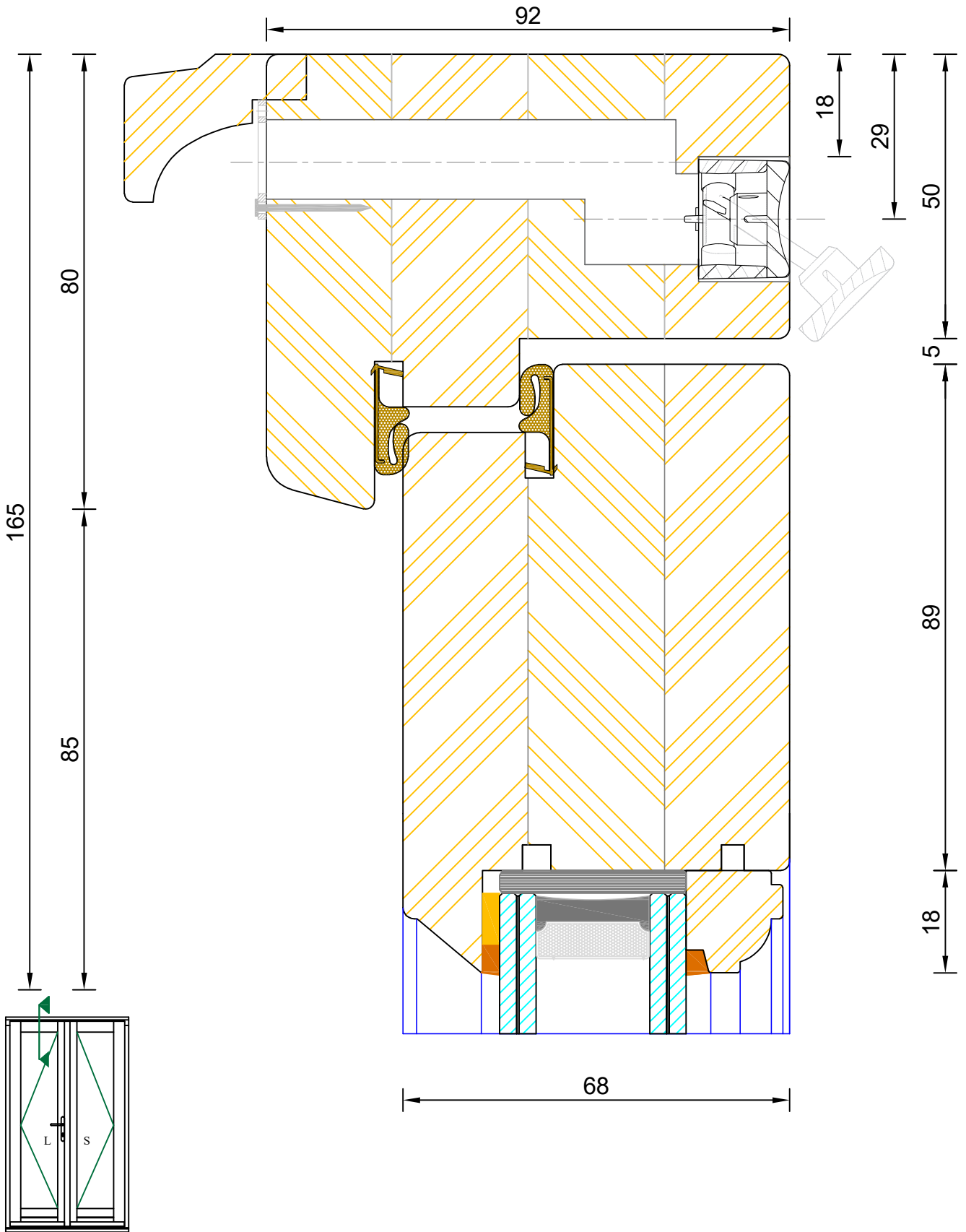
DIMENSIONS	PLOT SIZE	SCALE	DATE	REV	DWG NO.
MM	A4	1:1	01.01.2019	B	2602



Traditional Open In Flush French Door
Frame & Leaf Head (Standard - Vent in Top Rail)

DIMENSIONS	PLOT SIZE	SCALE	DATE	REV	DWG NO.
MM	A4	1:1	02.08.2022	B	2603

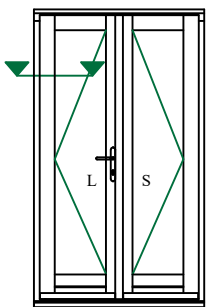
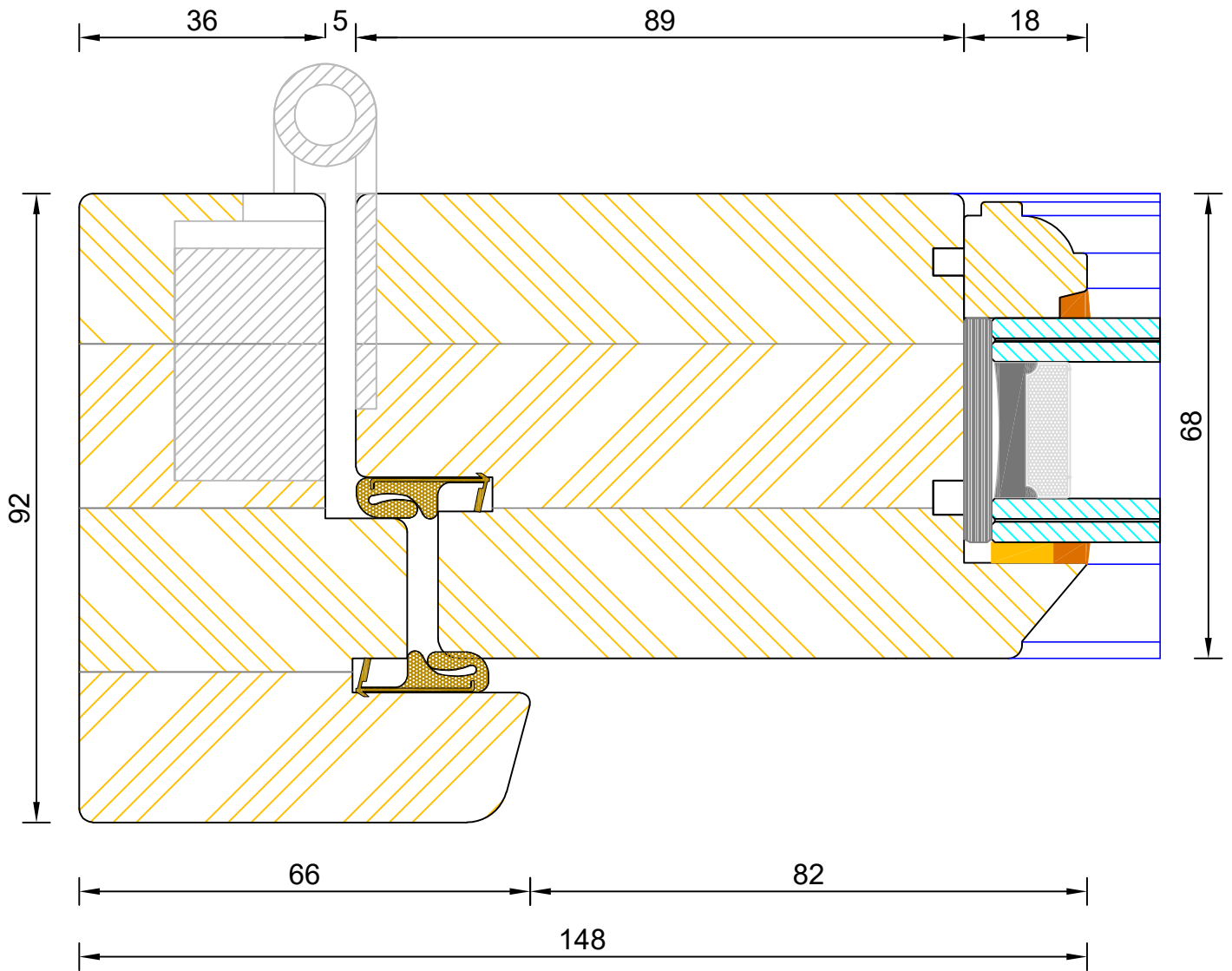
Please consider the environment before printing



Traditional Open In Flush French Door
 Frame & Leaf Head (Optional - Vent in Frame Head)

DIMENSIONS	PLOT SIZE	SCALE	DATE	REV	DWG NO.
MM	A4	1:1	02.08.2022	B	2603.1

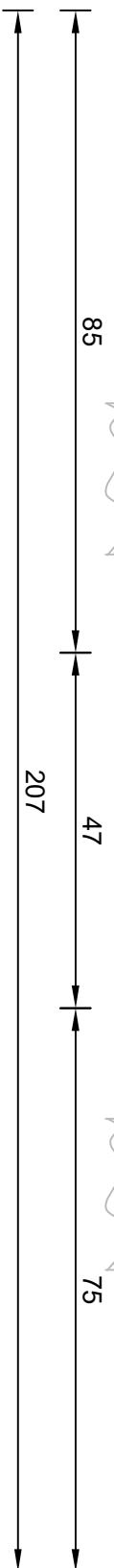
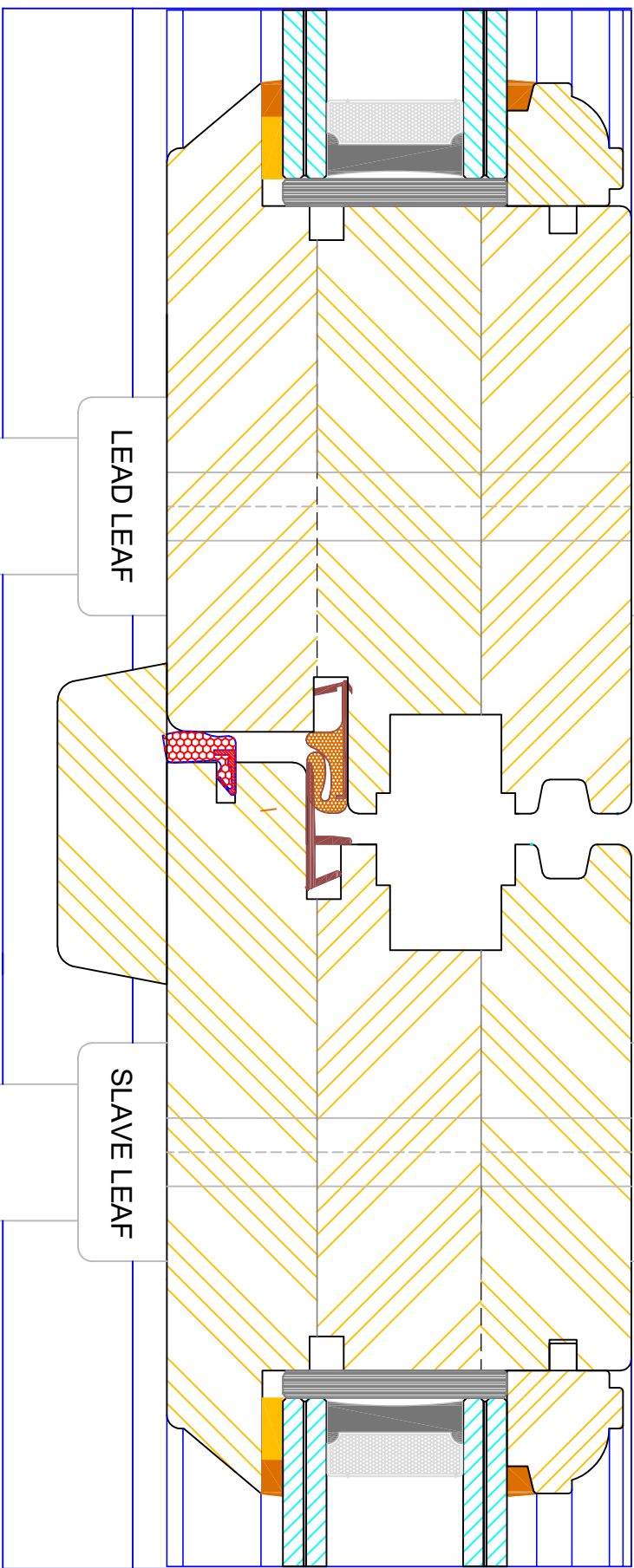
Please consider the environment before printing



Traditional Open In Flush French Door Frame & leaf Jamb

DIMENSIONS	PLOT SIZE	SCALE	DATE	REV	DWG NO.
MM	A4	1:1	02.08.2022	B	2604

Please consider the environment before printing



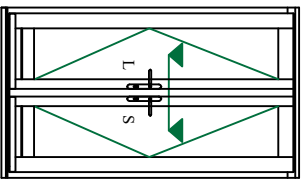
LEAD LEAF

SLAVE LEAF

Traditional Open In Flush French Door
Flying Mullion (Double Handle)

DIMENSIONS	PLOT SIZE	SCALE	DATE	REV	DWG NO.
MM	A1	1:1	02.08.2022	B	2605

Please consider the environment before printing



Note: Used as standard on doors >2301mm high



Bereco

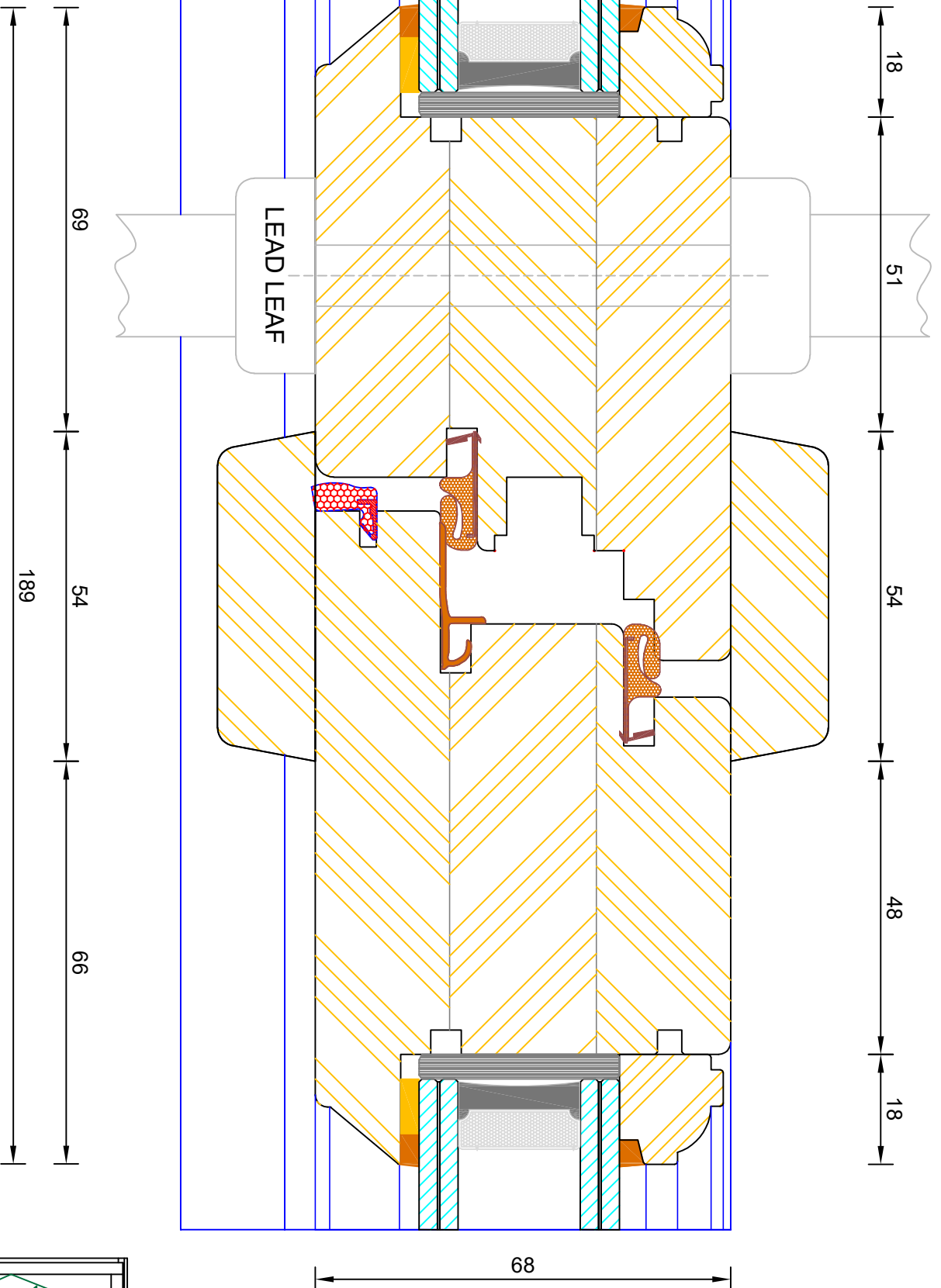
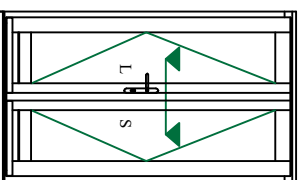
Traditional Open In Flush French Door Flying Mullion (Double Handle)

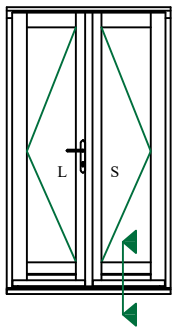
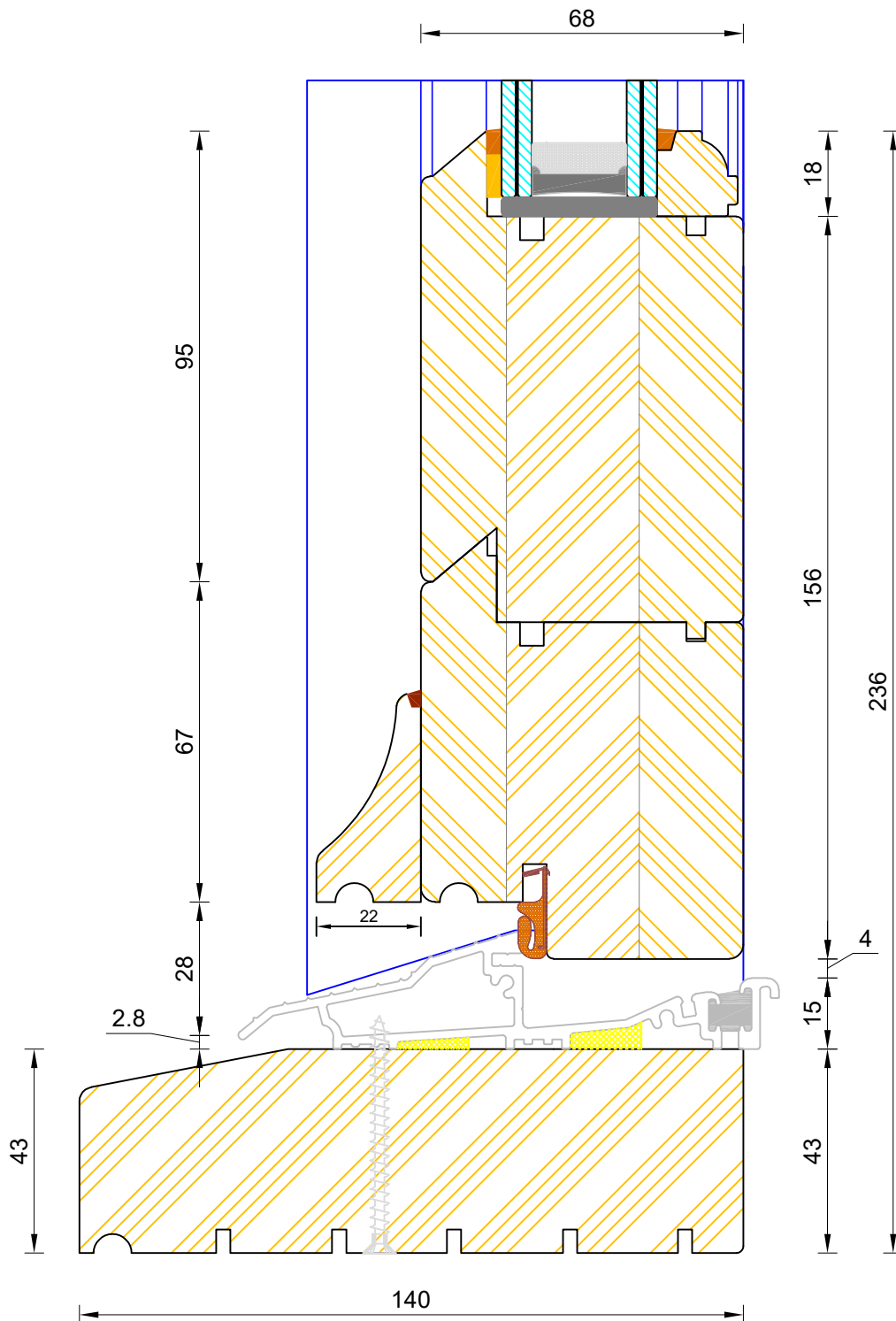
DIMENSIONS	PLOT SIZE	SCALE	DATE	REV	DWG NO.
MM	A1	1:1	02.08.2022	B	2605.1

Please consider the environment before printing

2605.1

Note: Used as standard on doors <2300mm high unless otherwise specified



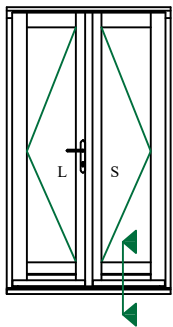
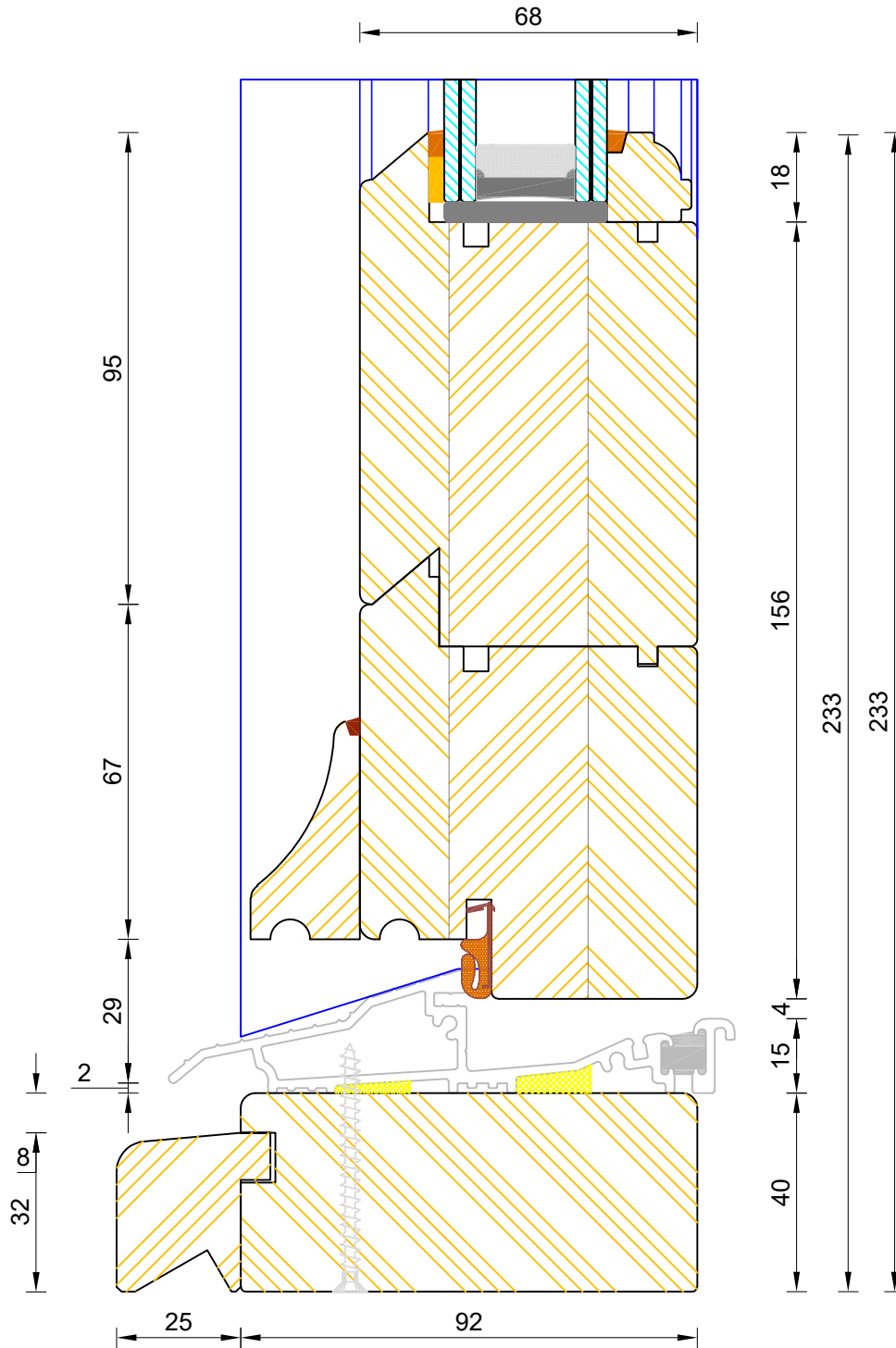


If not otherwise stated, Hardwood Threshold will be stained 5064 Walnut.



Traditional Open In Flush French Door Standard Thresh

DIMENSIONS	PLOT SIZE	SCALE	DATE	REV	DWG NO.
MM	A3	1:1	02.08.2022	B	2606
Please consider the environment before printing					



CILL EXTENSION - available options: 25mm (117mm o/a) / 47mm (139mm o/a) / 62mm (154mm o/a) / 87mm (179mm o/a) / 114mm (206mm o/a) / 125mm (217mm o/a) / 140mm (232mm o/a)

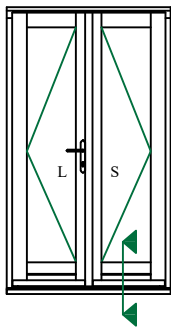
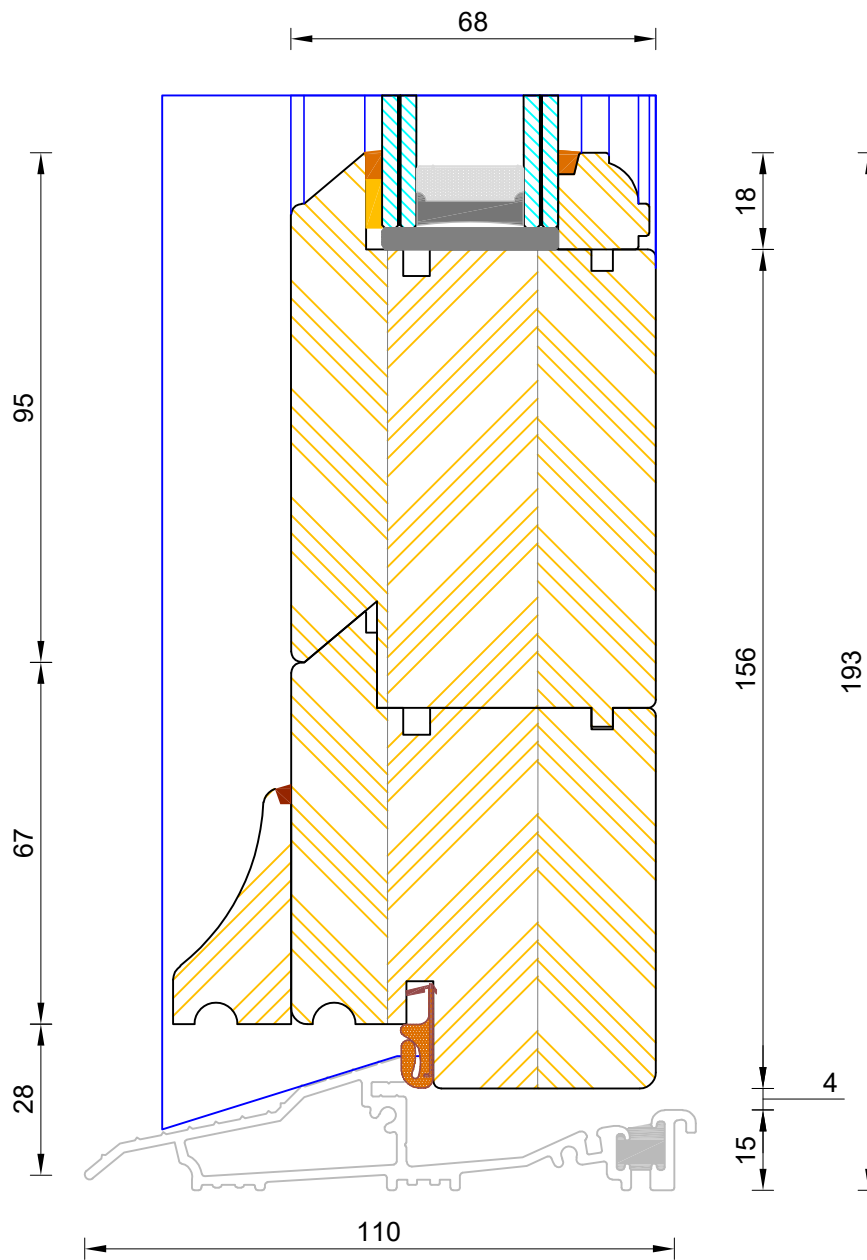
NOTE: Cill Extensions should be supported from underneath; the maximum overhang over Brick / Blockwork for cill extension should not exceed 25mm in order to avoid damage when stepped on. Warranties are invalidated when fitted with overhang in excess to that.

If not otherwise stated, Hardwood Threshold will be stained 5064 Walnut.



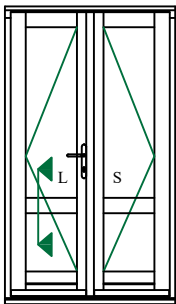
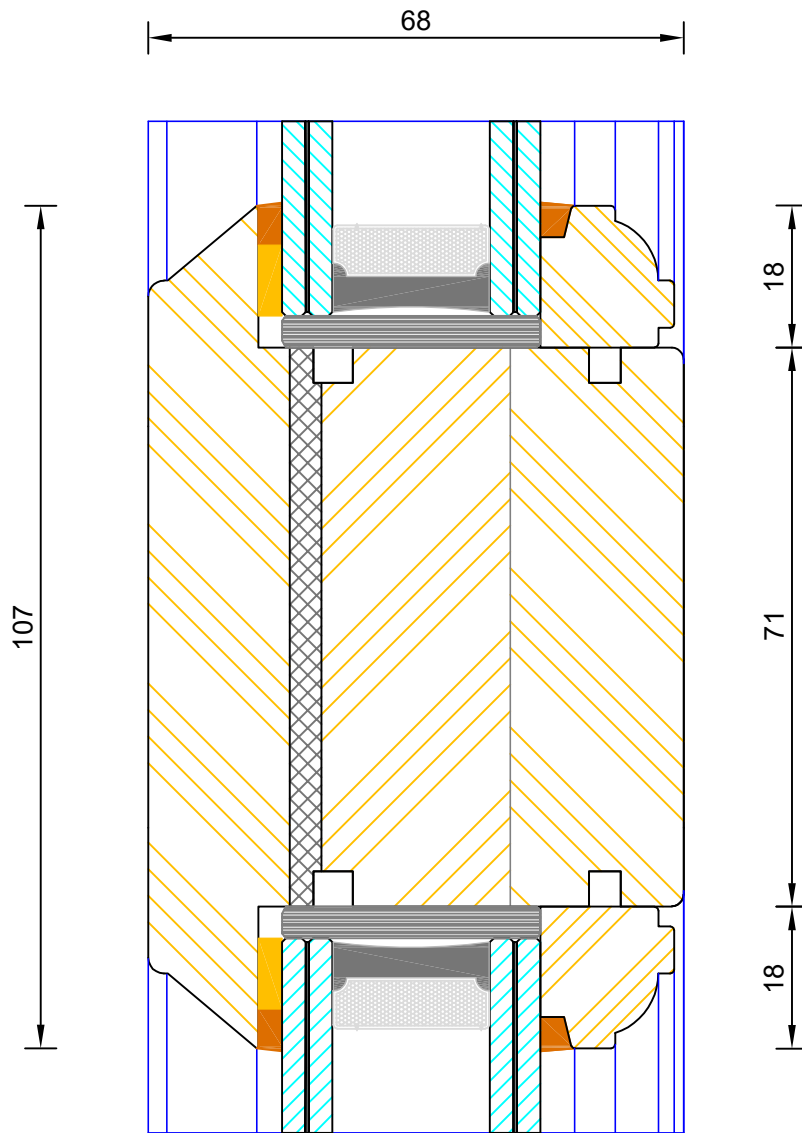
Traditional Open In Flush French Door Coupling Thresh

DIMENSIONS	PLOT SIZE	SCALE	DATE	REV	DWG NO.
MM	A3	1:1	02.08.2022	B	2607
Please consider the environment before printing					



**Traditional Open In Flush French Door
Mobility Thresh**

DIMENSIONS	PLOT SIZE	SCALE	DATE	REV	DWG NO.
MM	A3	1:1	02.08.2022	B	2608
Please consider the environment before printing					



**Traditional Open In Flush French Door
Mid Rail**

DIMENSIONS	PLOT SIZE	SCALE	DATE	REV	DWG NO.
MM	A4	1:1	02.08.2022	B	2609

Please consider the environment before printing