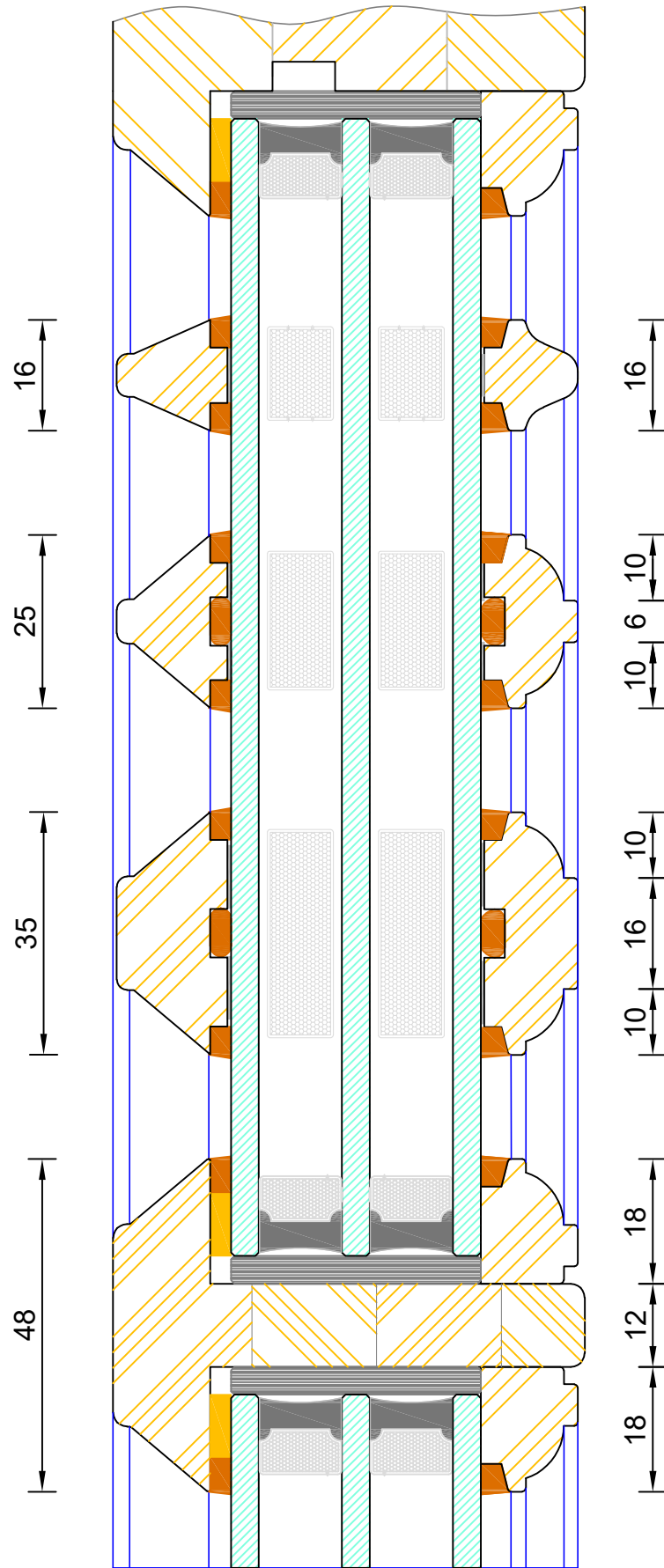


**Traditional Open In Flush French Door**  
**Triple Glazed - Cill Extension Options**

DIMENSIONS	PLOT SIZE	SCALE	DATE	REV	DWG NO.
MM	A4	1:1	25.09.2019	B	<b>2620</b>

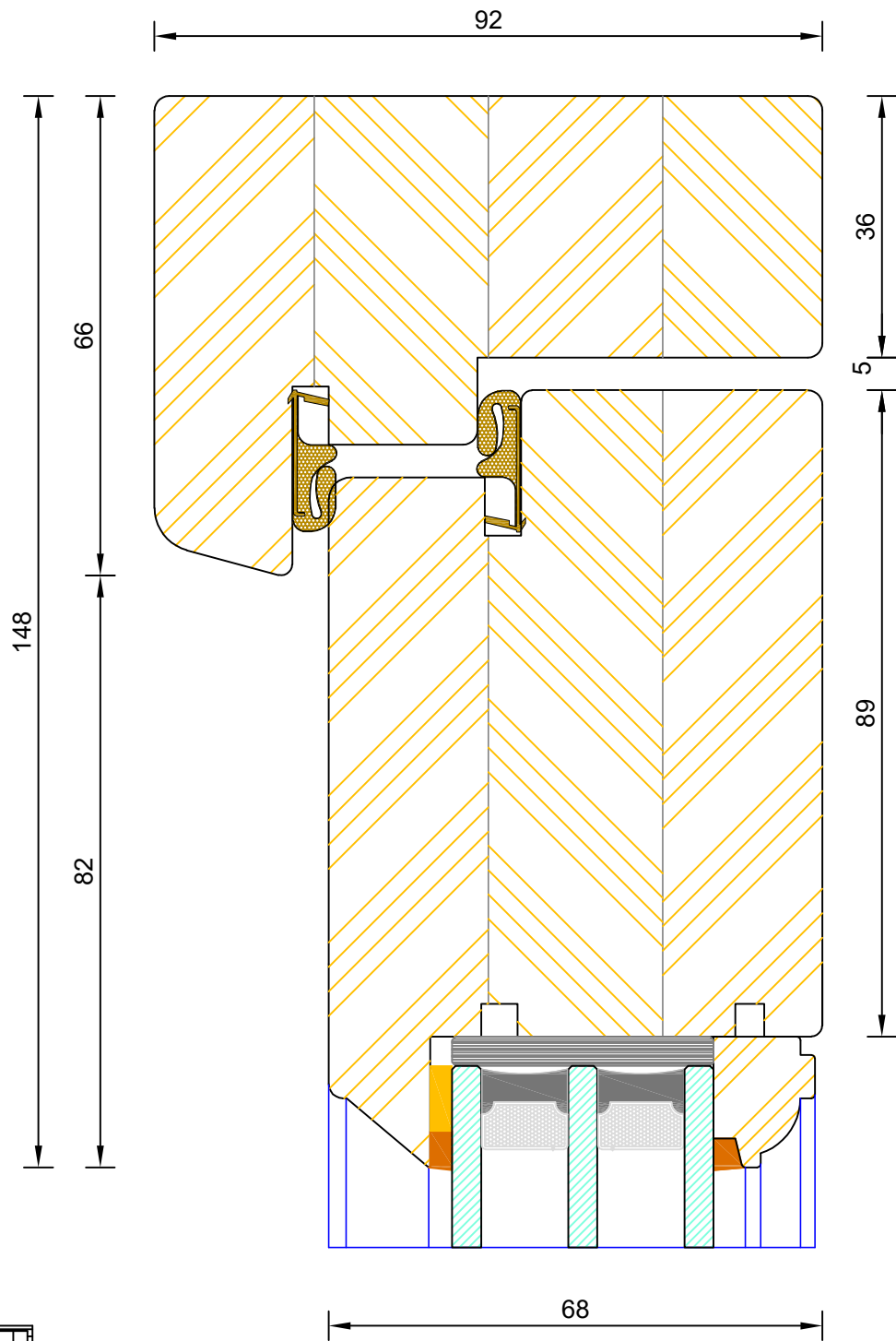
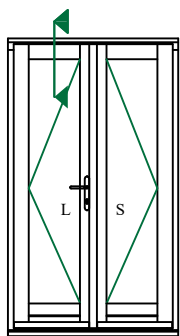
Please consider the environment before printing



**Traditional Open In Flush French Door**  
**Triple Glazed - Bar Options**

DIMENSIONS	PLOT SIZE	SCALE	DATE	REV	DWG NO.
MM	A4	1:1	01.01.2019	B	<b>2612</b>

Please consider the environment before printing

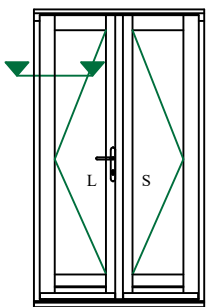
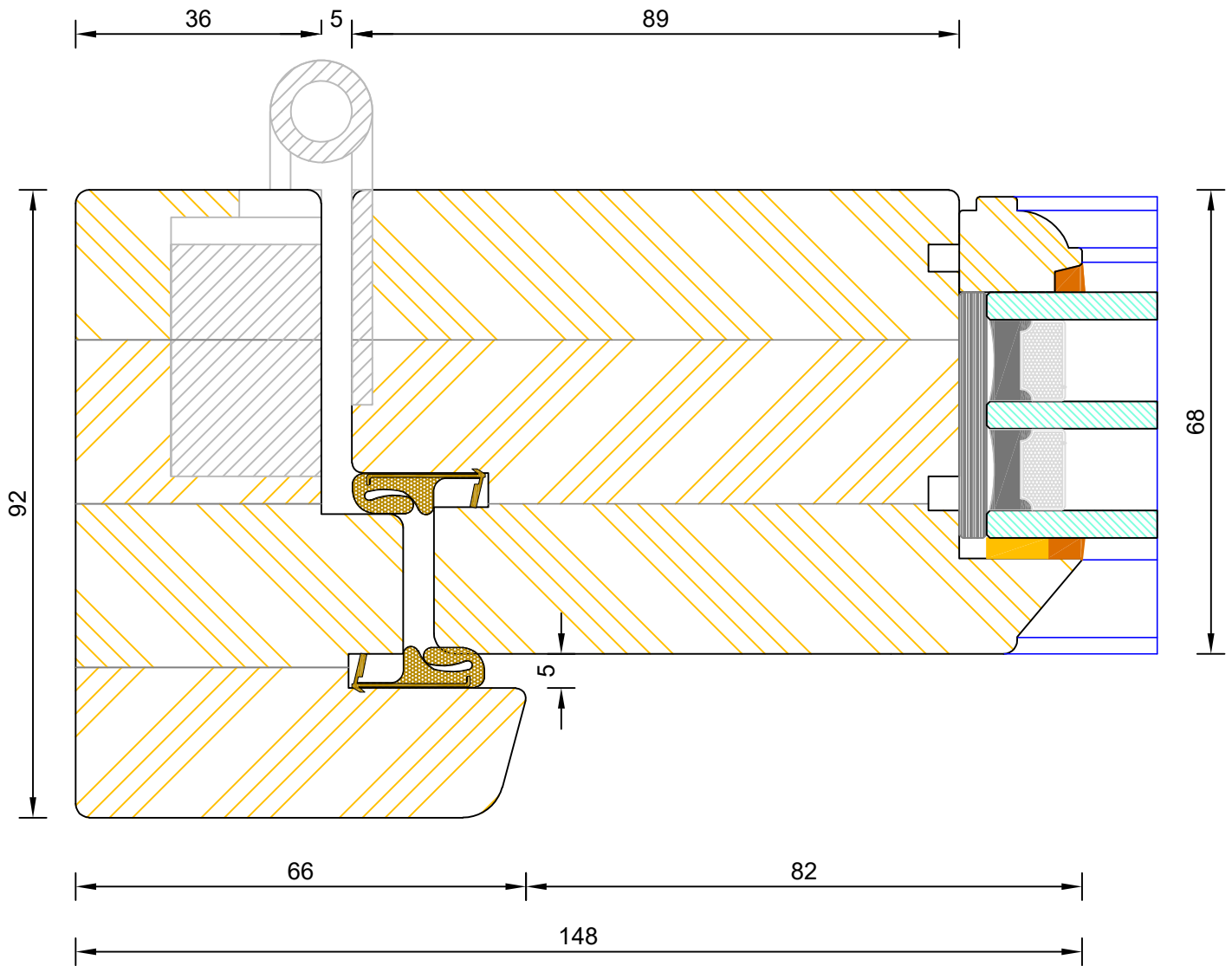


**Traditional Open In Flush French Door**  
**Triple Glazed - Frame & Leaf Head**

DIMENSIONS	PLOT SIZE	SCALE	DATE	REV	DWG NO.
MM	A4	1:1	02.08.2022	A	<b>2613</b>

Please consider the environment before printing





**Traditional Open In Flush French Door**  
**Triple Glazed - Frame & leaf Jamb**

DIMENSIONS	PLOT SIZE	SCALE	DATE	REV	DWG NO.
MM	A4	1:1	02.08.2022	A	<b>2614</b>

Please consider the environment before printing

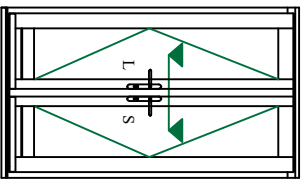
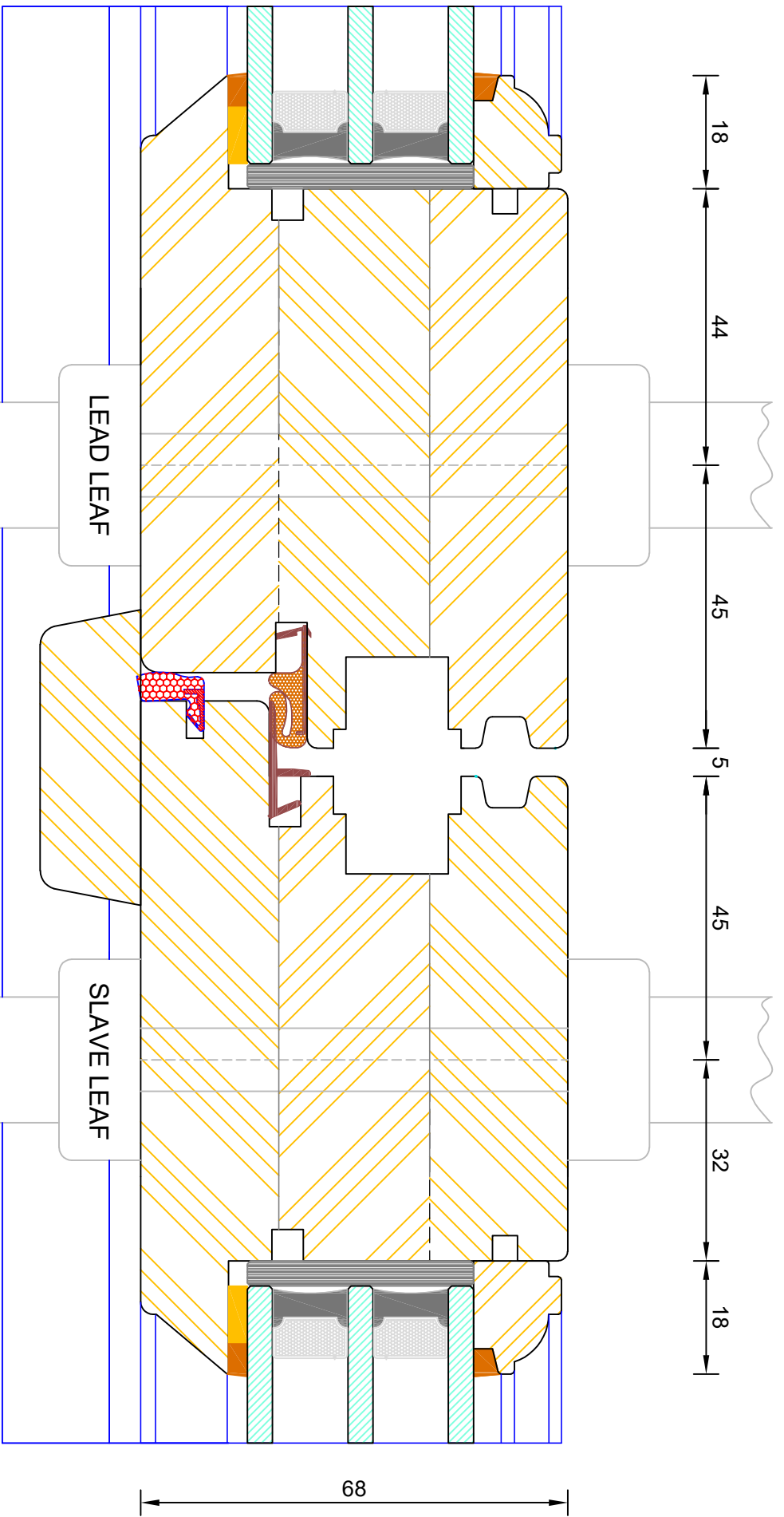


# Bereco

## Traditional Open In Flush French Door Triple Glazed - Flying Mullion (Double Handle)

DIMENSIONS	PLOT SIZE	SCALE	DATE	REV	DWG NO.
MM	A1	1:1	02.08.2022	A	2615

Please consider the environment before printing



Note: Used as standard on doors >2301mm high

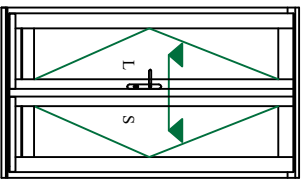
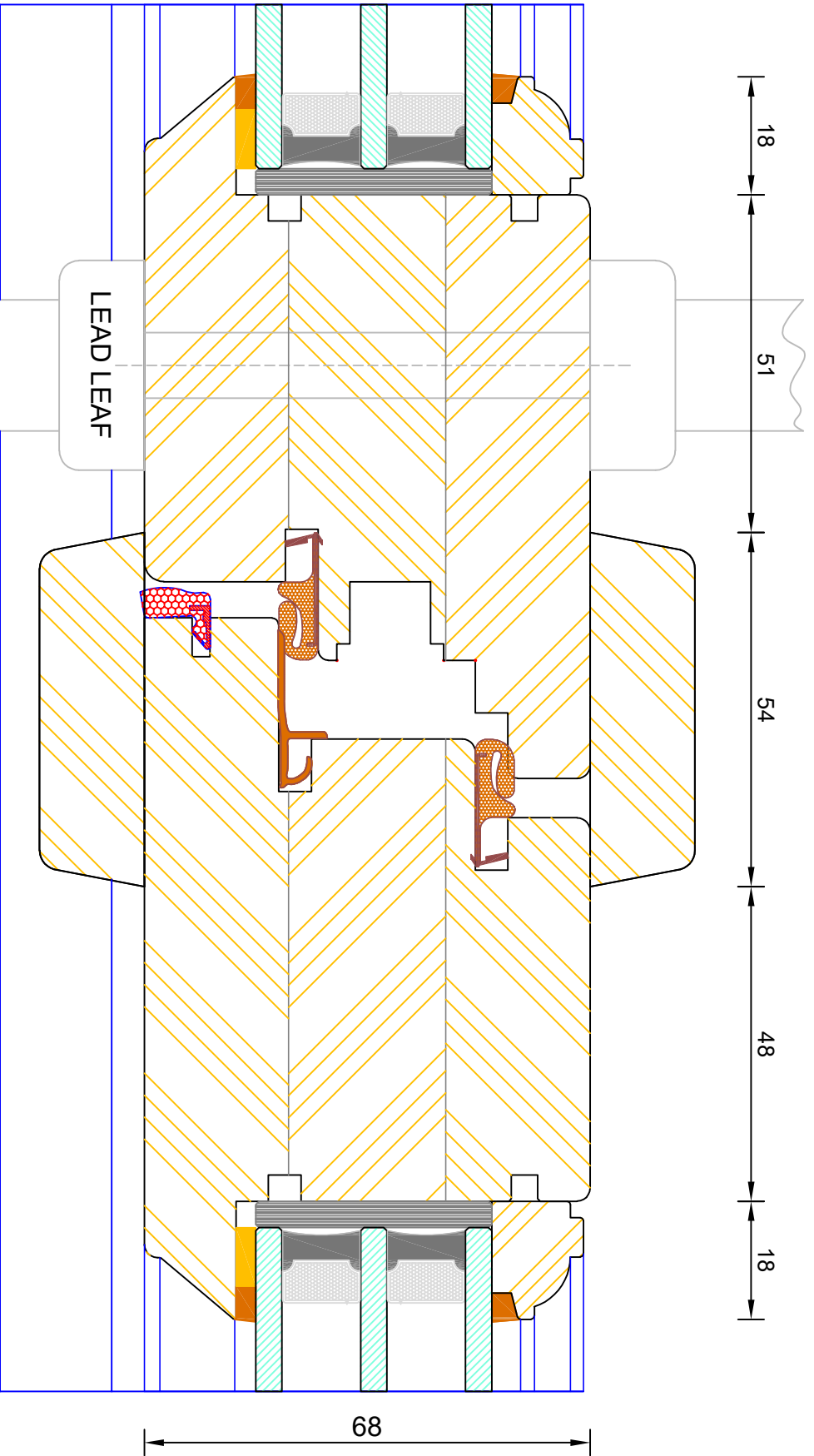


# Berenco

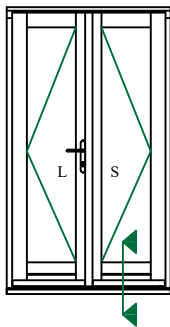
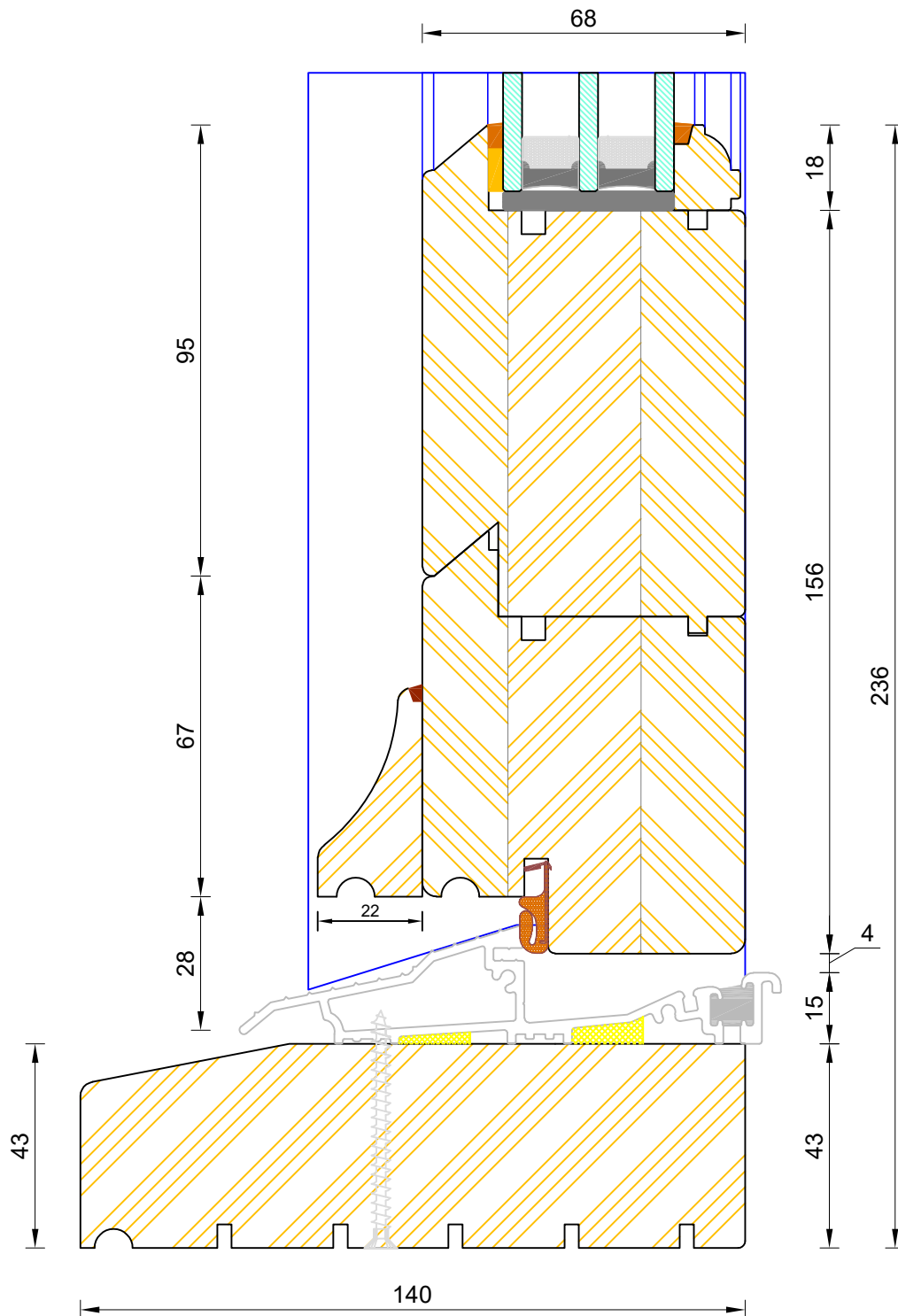
## Traditional Open In Flush French Door Triple Glazed - Flying Mullion (Single Handle)

DIMENSIONS	PLOT SIZE	SCALE	DATE	REV	DWG NO.
MM	A1	1:1	05.04.2017	A	2615.1

Please consider the environment before printing



Note: Used as standard on doors <2300mm high unless otherwise specified



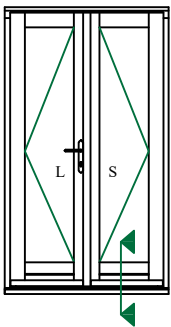
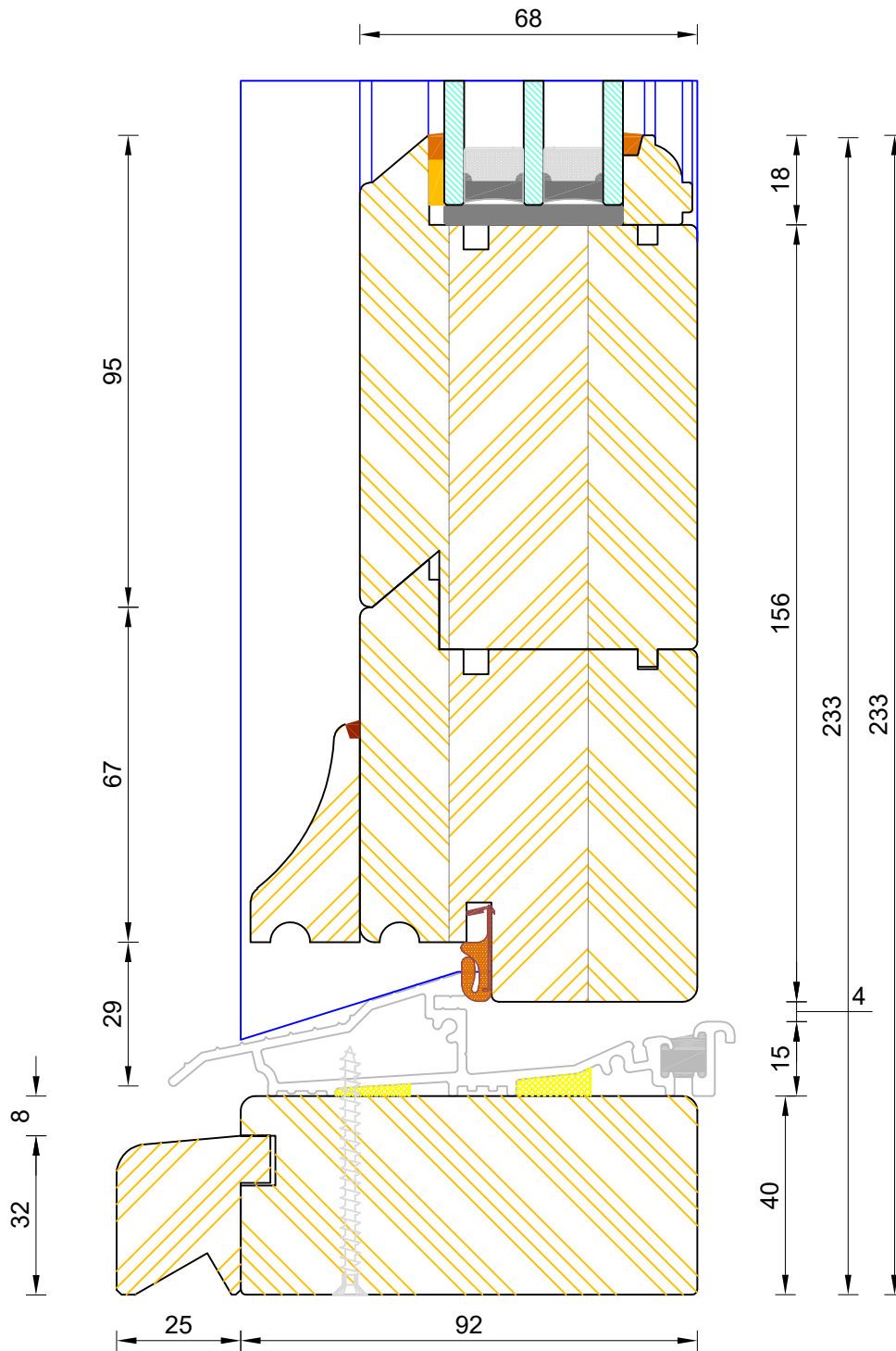
If not otherwise stated, Hardwood Threshold will be stained 5064 Walnut.



**Traditional Open In Flush French Door**  
Triple Glazed - Standard Thresh

DIMENSIONS	PLOT SIZE	SCALE	DATE	REV	DWG NO.
MM	A3	1:1	02.08.2022	A	<b>2616</b>

Please consider the environment before printing



CILL EXTENSION - available options: 25mm (117mm o/a) / 47mm (139mm o/a) / 62mm (154mm o/a) / 87mm (179mm o/a) / 114mm (206mm o/a) / 125mm (217mm o/a) / 140mm (232mm o/a)

NOTE: Cill Extensions should be supported from underneath; the maximum overhang over Brick / Blockwork for cill extension should not exceed 25mm in order to avoid damage when stepped on. Warranties are invalidated when fitted with overhang in excess to that.

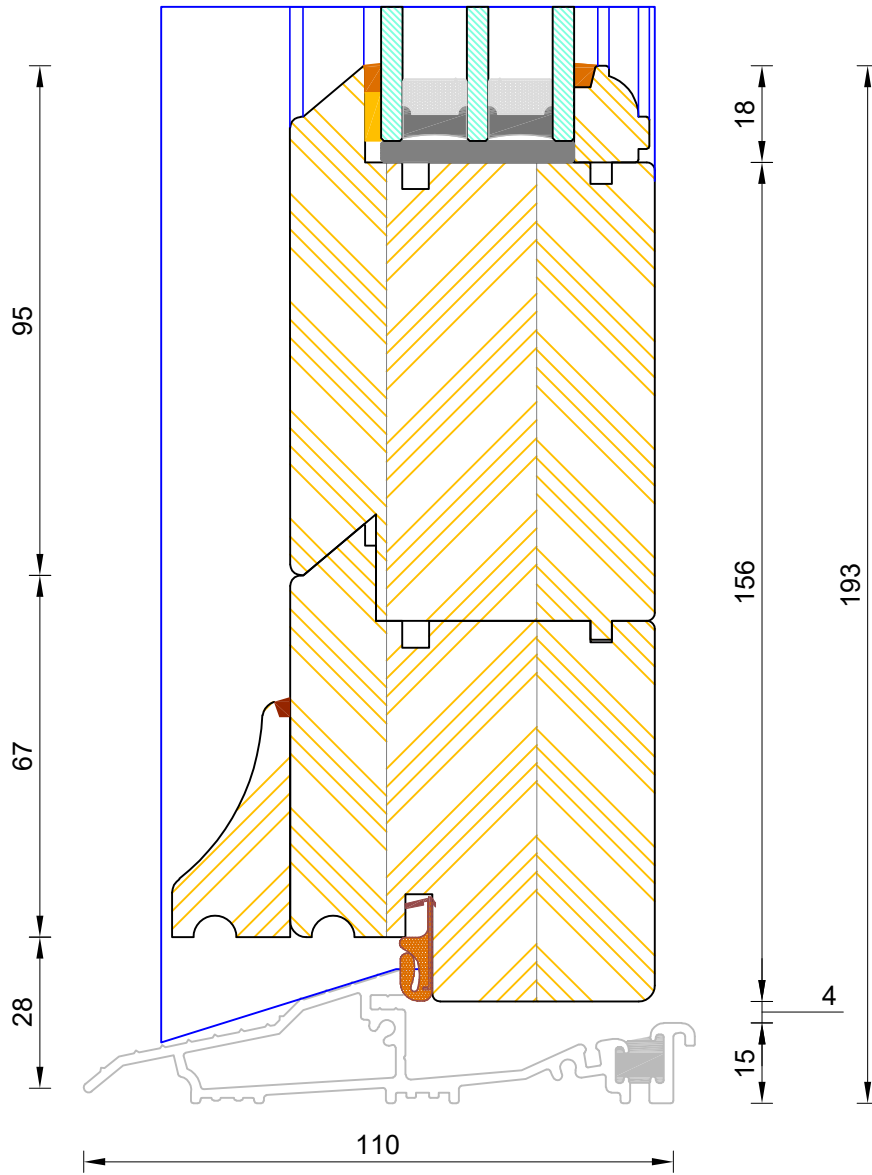
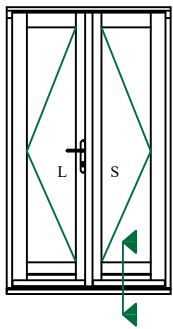
If not otherwise stated, Hardwood Threshold will be stained 5064 Walnut.



### Traditional Open In Flush French Door Triple Glazed - Coupling Thresh

DIMENSIONS	PLOT SIZE	SCALE	DATE	REV	DWG NO.
MM	A3	1:1	02.08.2022	A	<b>2617</b>
Please consider the environment before printing					

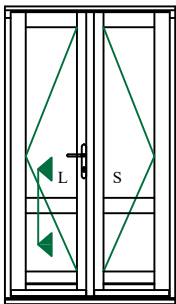
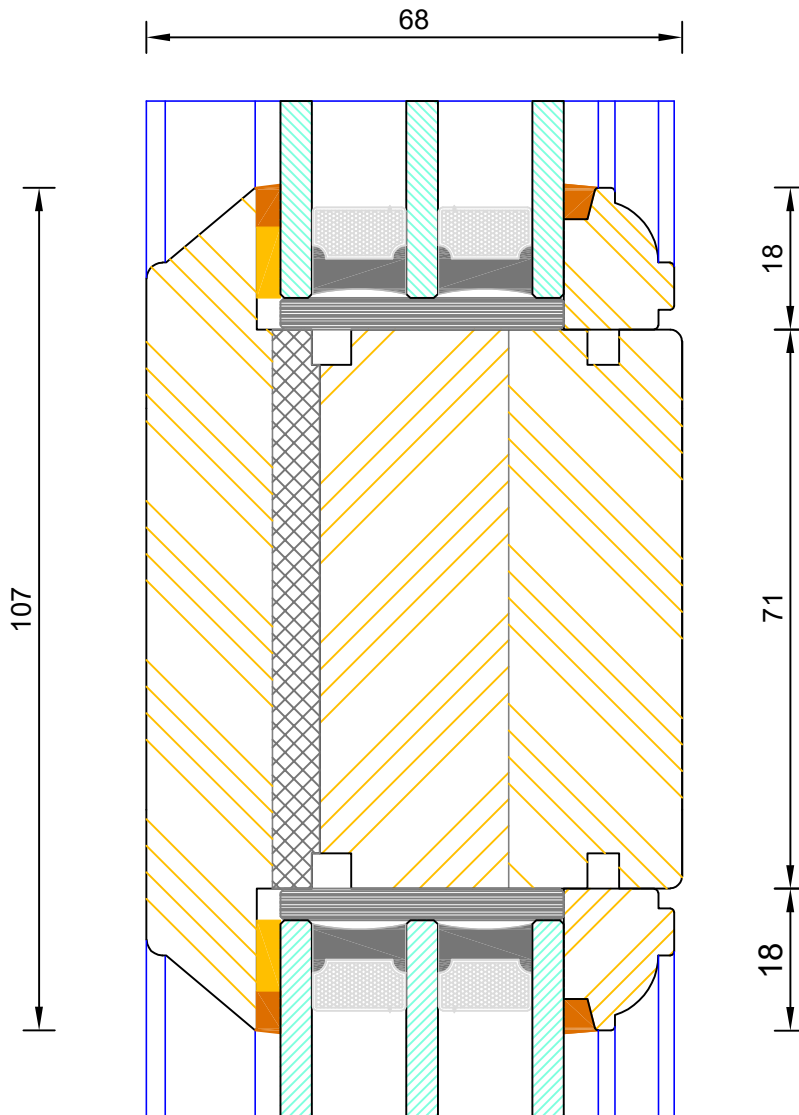




**Traditional Open In Flush French Door**  
**Triple Glazed - Mobility Thresh**

DIMENSIONS	PLOT SIZE	SCALE	DATE	REV	DWG NO.
MM	A3	1:1	02.08.2022	A	<b>2618</b>

Please consider the environment before printing



**Traditional Open In Flush French Door  
Triple Glazed - Mid Rail**

DIMENSIONS	PLOT SIZE	SCALE	DATE	REV	DWG NO.
MM	A4	1:1	02.08.2022	A	<b>2619</b>

Please consider the environment before printing